



GlobalAid Homes  
*Building Hope, Rebuilding Lives*

# Modular Buildings Incorporating Modified Shipping Containers

Samples Of Available Options & Designs





GlobalAid Homes  
*Building Hope, Rebuilding Lives*

GlobalAid Homes introduces modular solution that merges sustainability, efficiency, and versatility: Buildings crafted from modified shipping containers.

In an era defined by dynamic needs and rapid evolution, the demand for adaptable and sustainable structures has never been more pronounced. Our solution harnesses the strength, durability, and widespread availability of shipping containers and ingeniously transforms them into customizable, modular spaces that redefine the possibilities of construction.

These examples of modular buildings offer a revolutionary approach to architecture, unlocking a realm of endless configurations for residential, commercial, and industrial purposes. By repurposing these containers, we not only minimize waste but also revolutionize the way we conceive, design, and implement structures.

To note a few of the advantages of these modular buildings – their adaptability to various environments, their eco-friendly footprint, their cost-effectiveness, and their swiftness in deployment.

Moreover, we encourage you to explore the limitless design options, technological integrations, and the seamless scalability that these structures offer, catering to the diverse and evolving needs of modern society.

As in our proprietary technology, GlobalAid Homes prides itself on providing leading solutions where innovation meets sustainability, where flexibility meets robustness, and where creativity meets functionality.

It's time to explore a new horizon in construction with our pioneering modular buildings crafted from modified shipping containers.

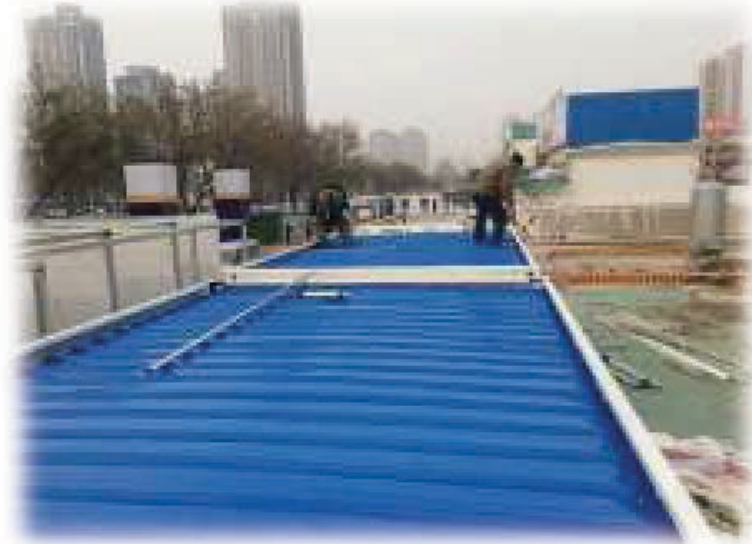
Thank you for being a part of this transformative journey.



GlobalAid Homes  
*Building Hope, Rebuilding Lives*

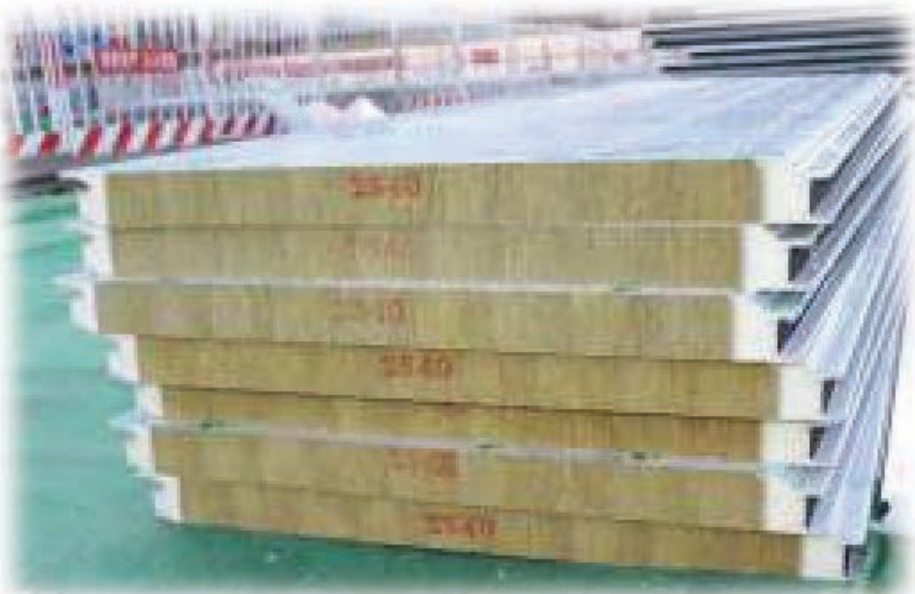
# Construction Elements







Sandwich-Panel





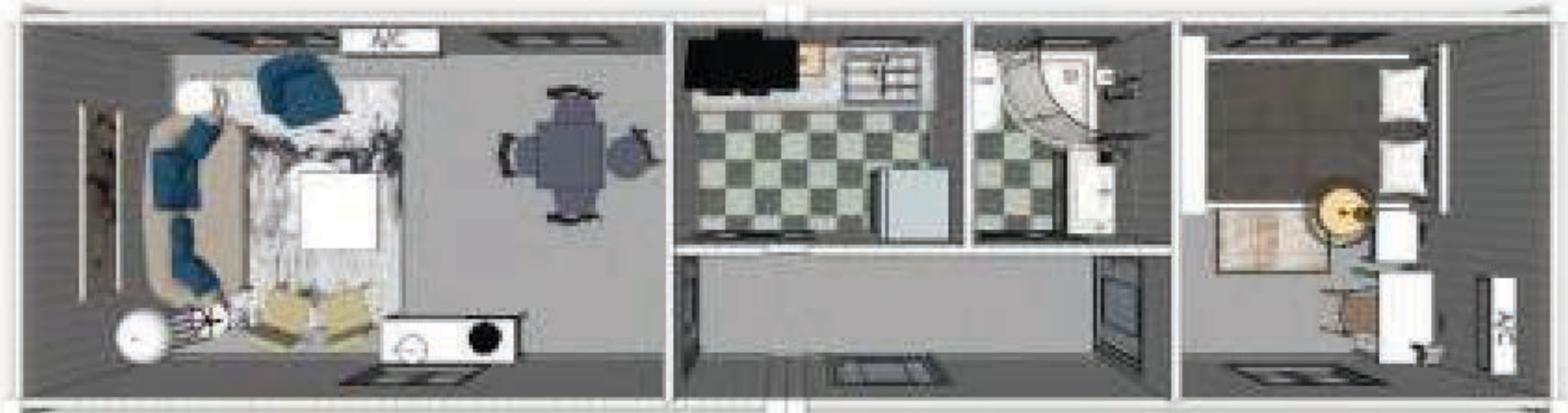
GlobalAid Homes  
*Building Hope, Rebuilding Lives*

## Mixed Use Applications:

Residential  
Institutional  
Commercial  
Healthcare





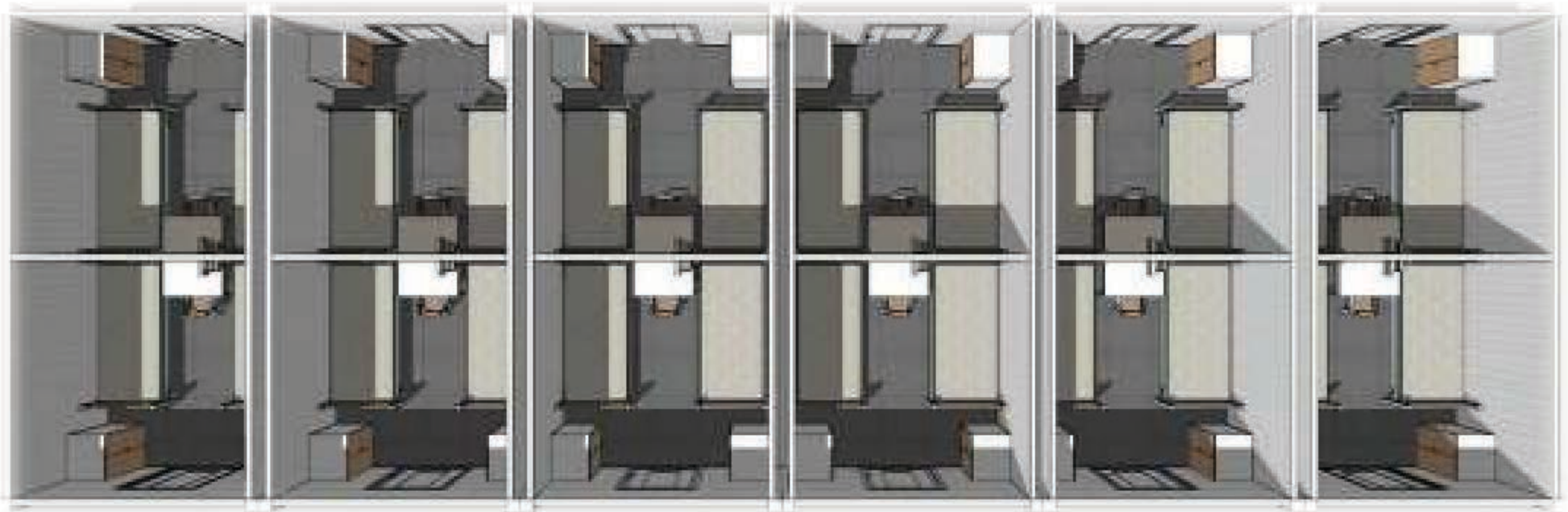






## Duplex House

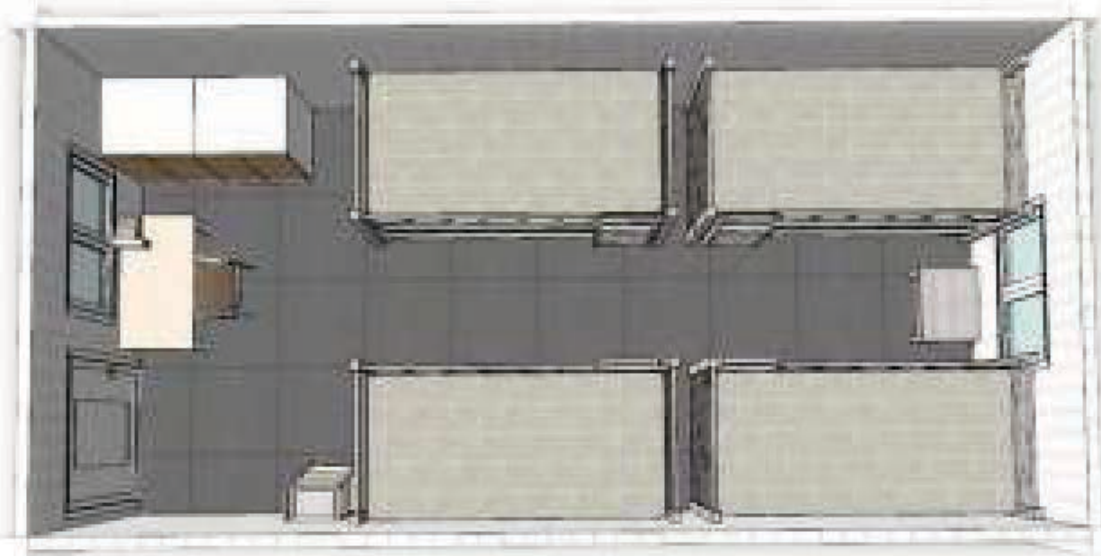




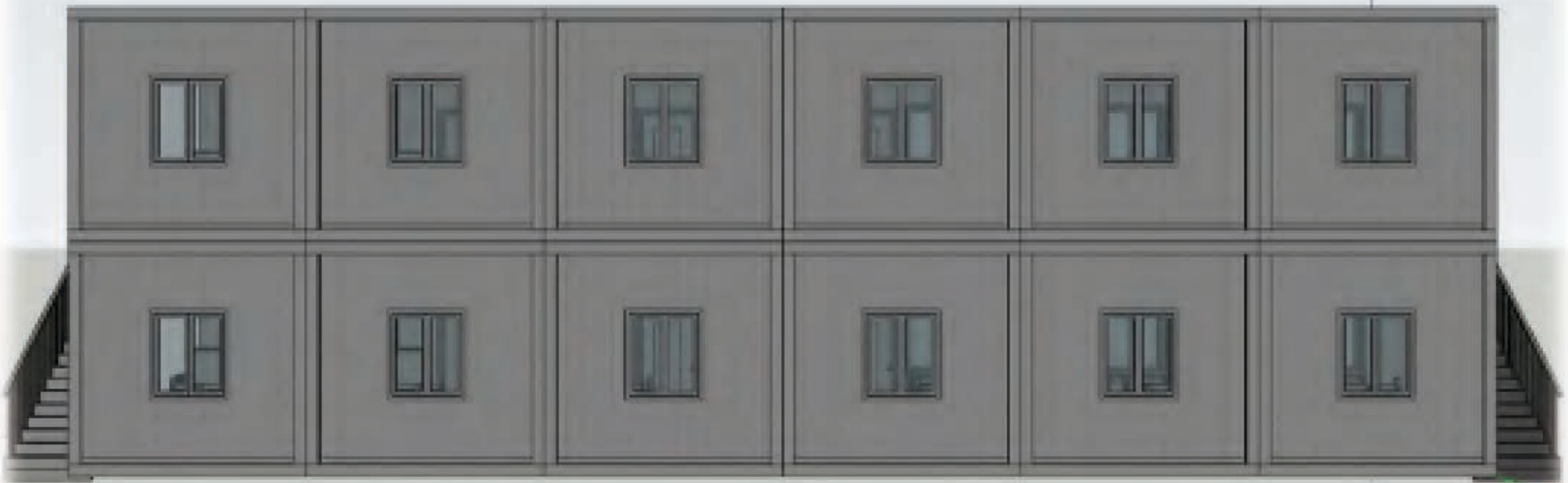


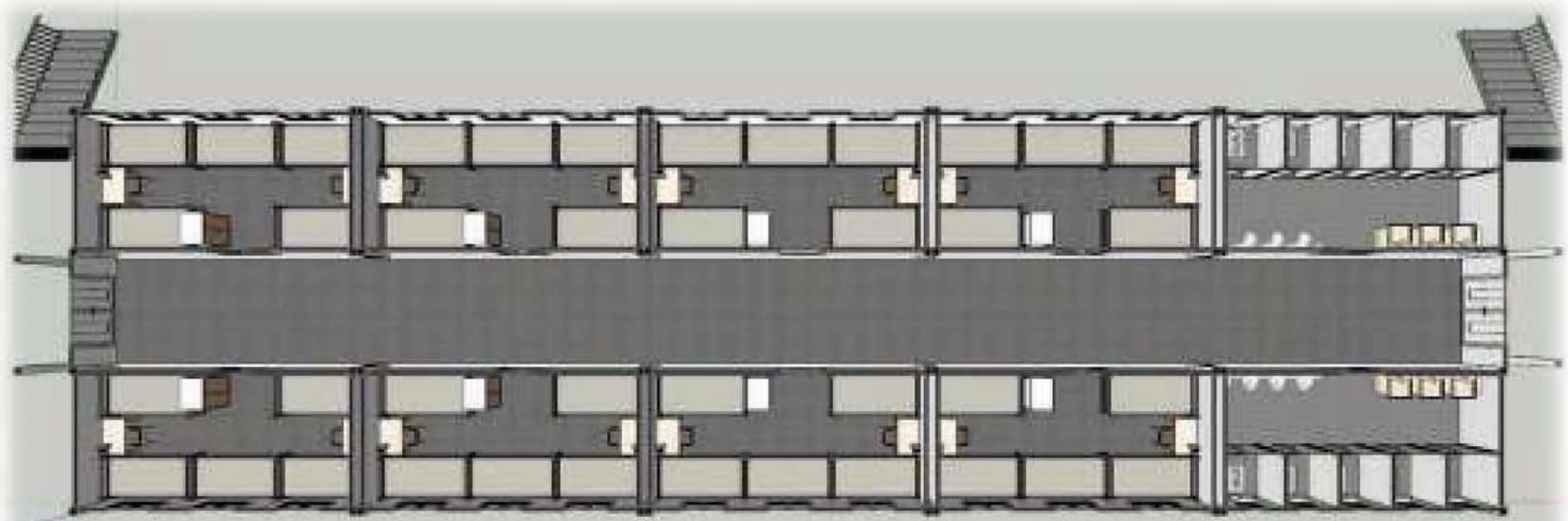
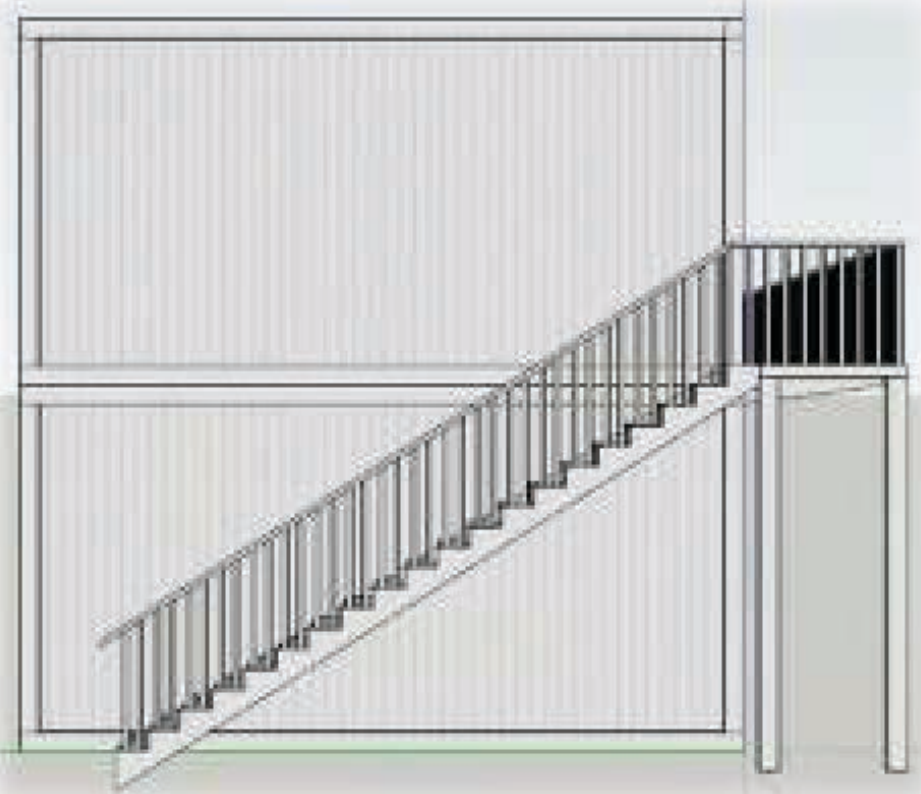
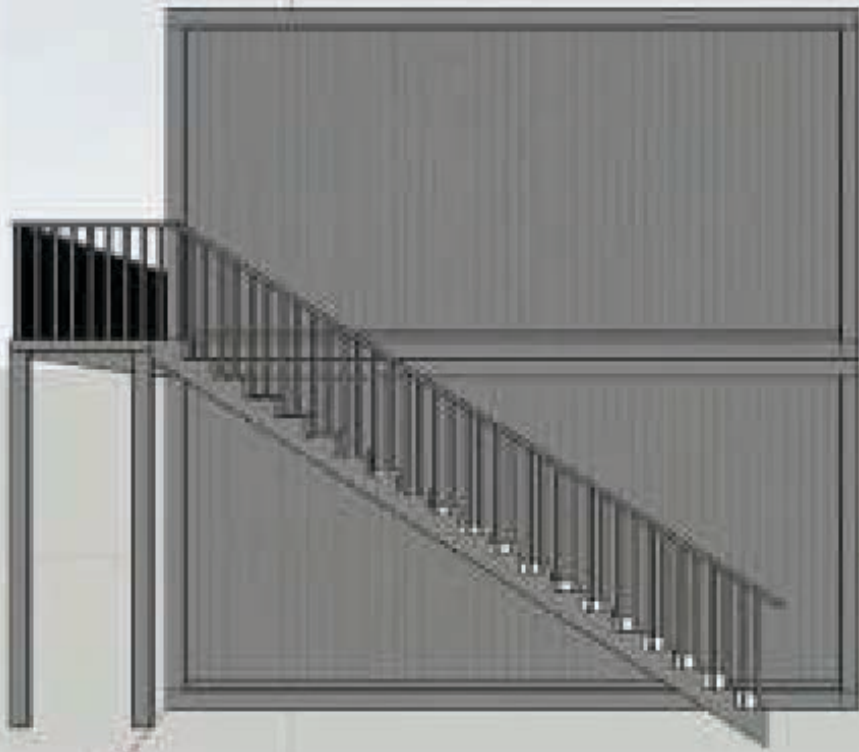


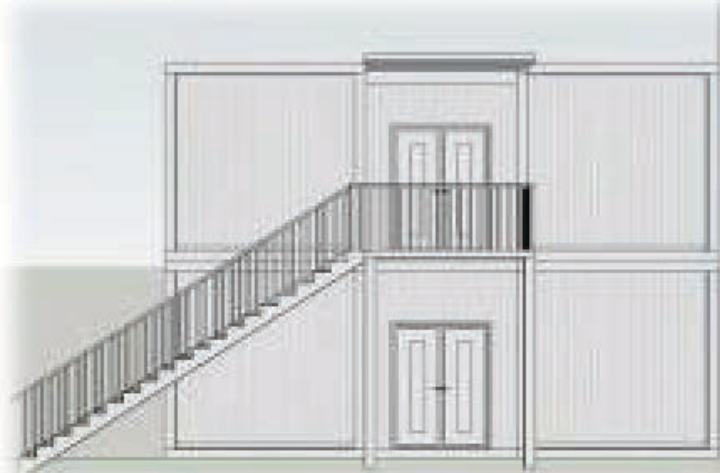
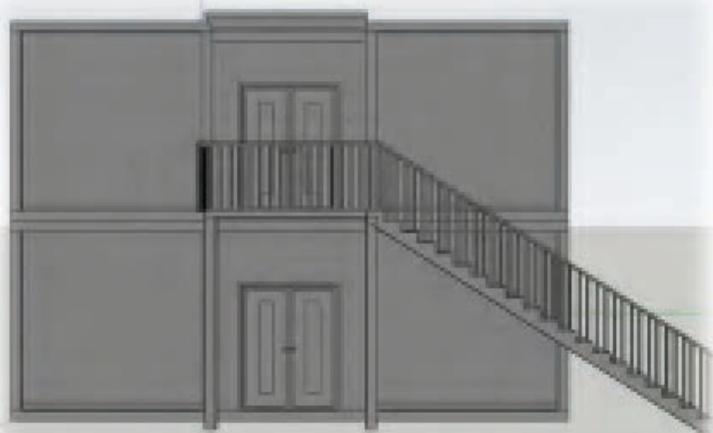
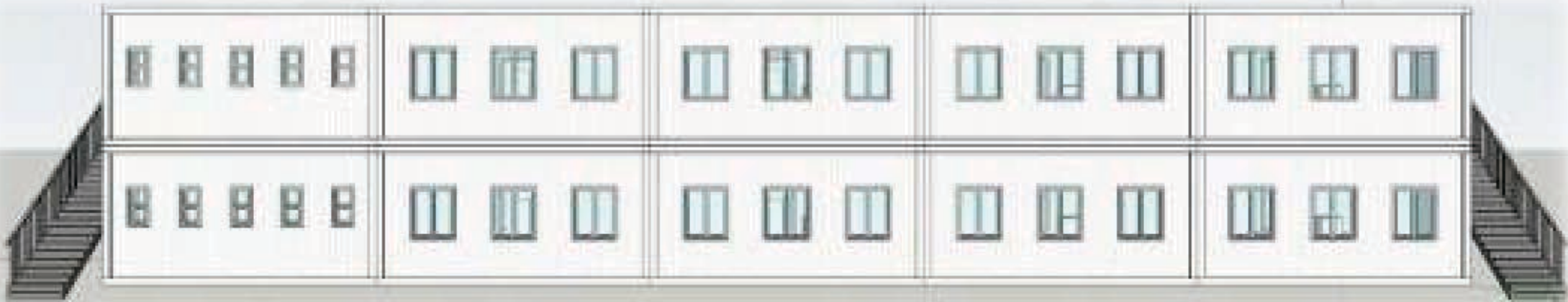
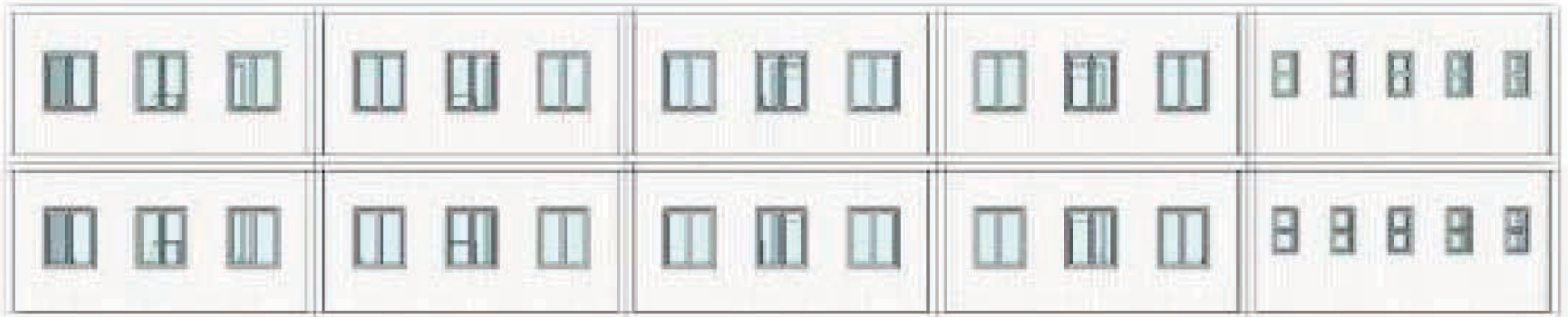






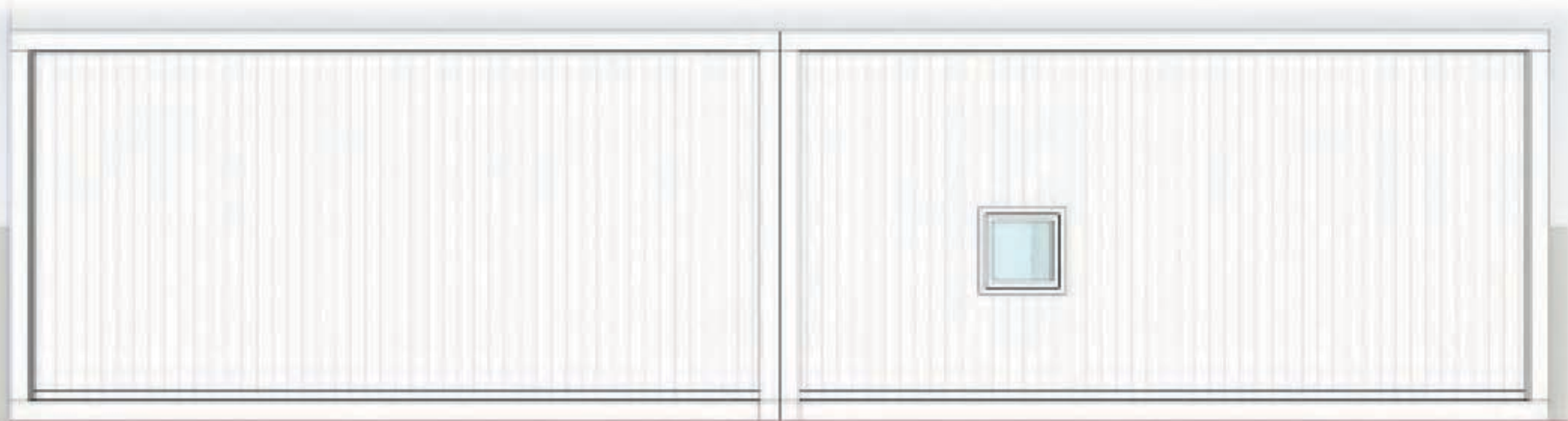




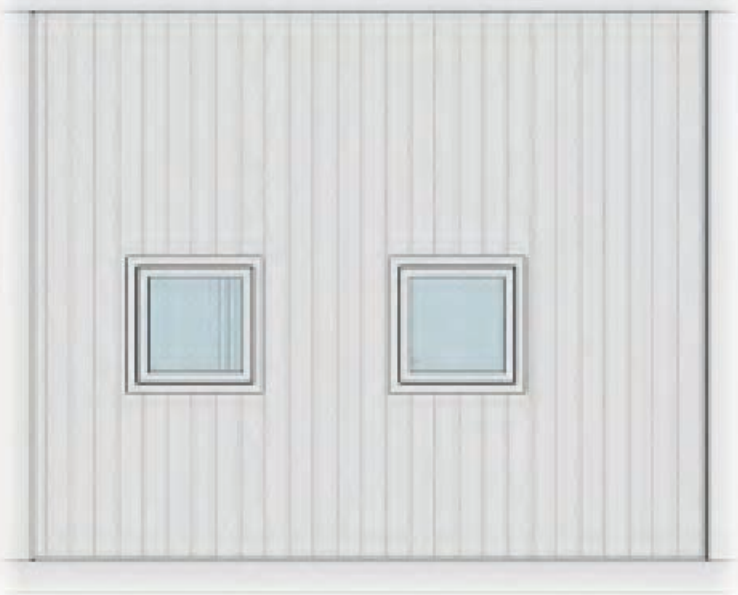
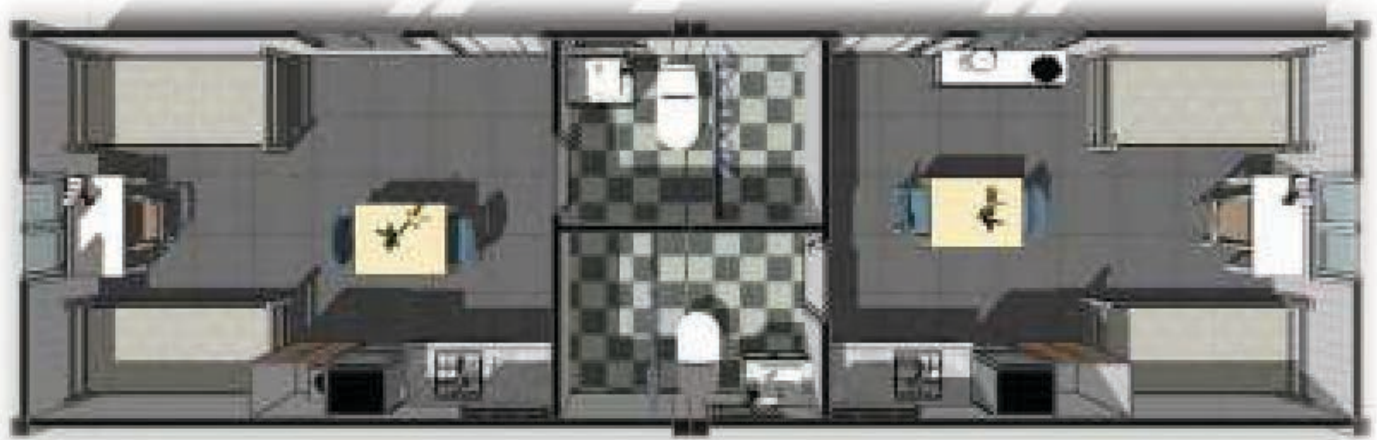












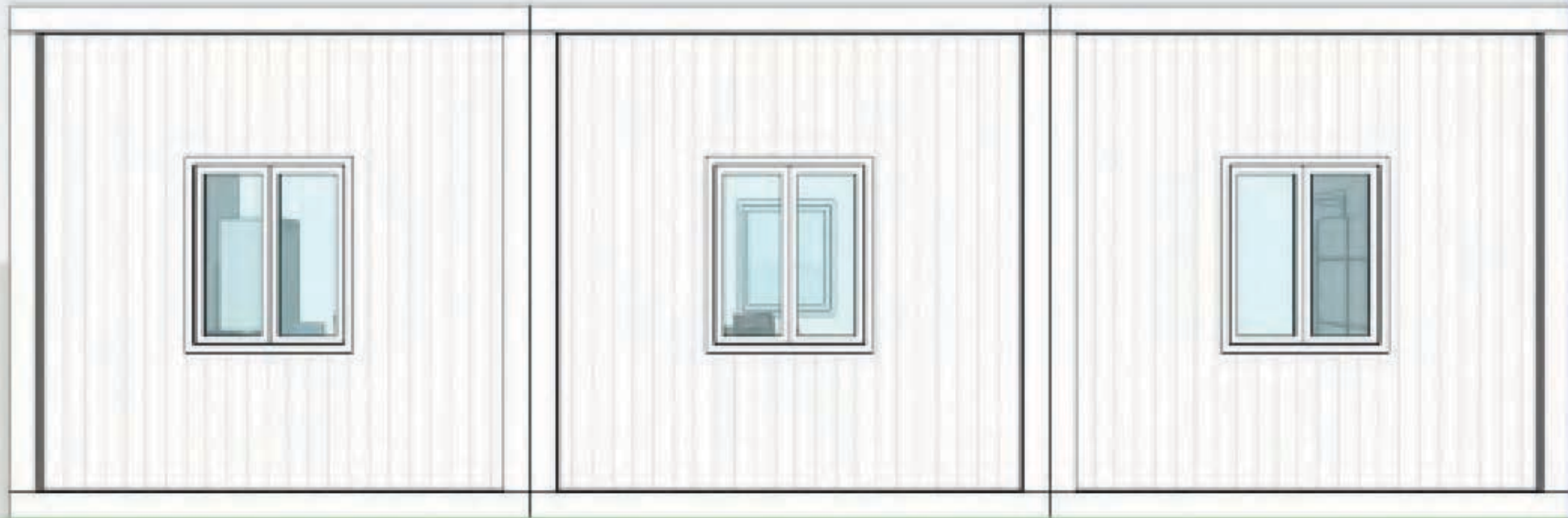


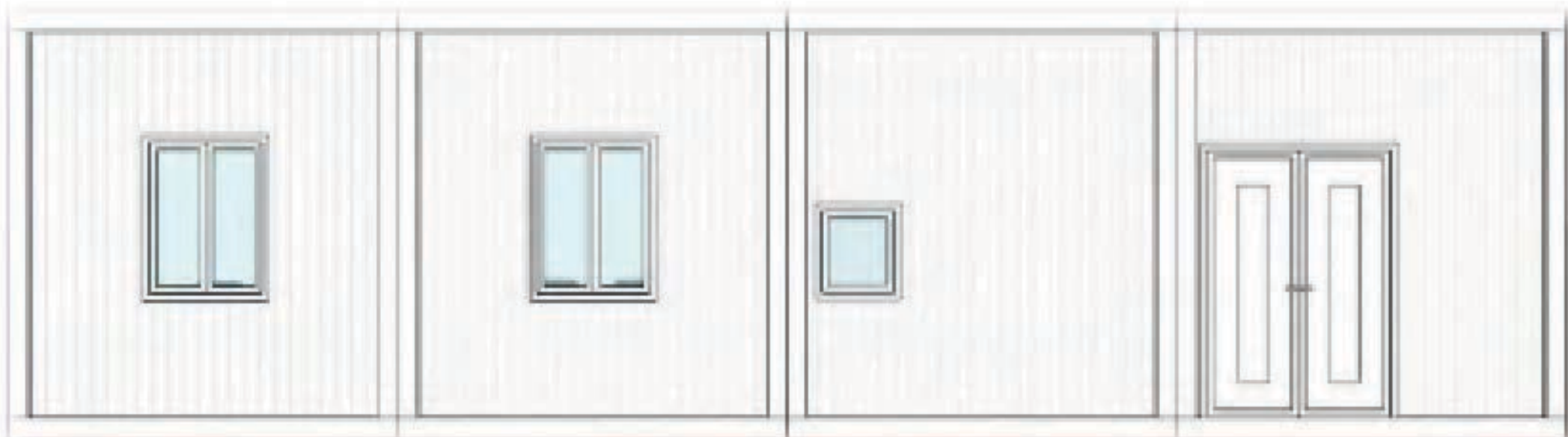




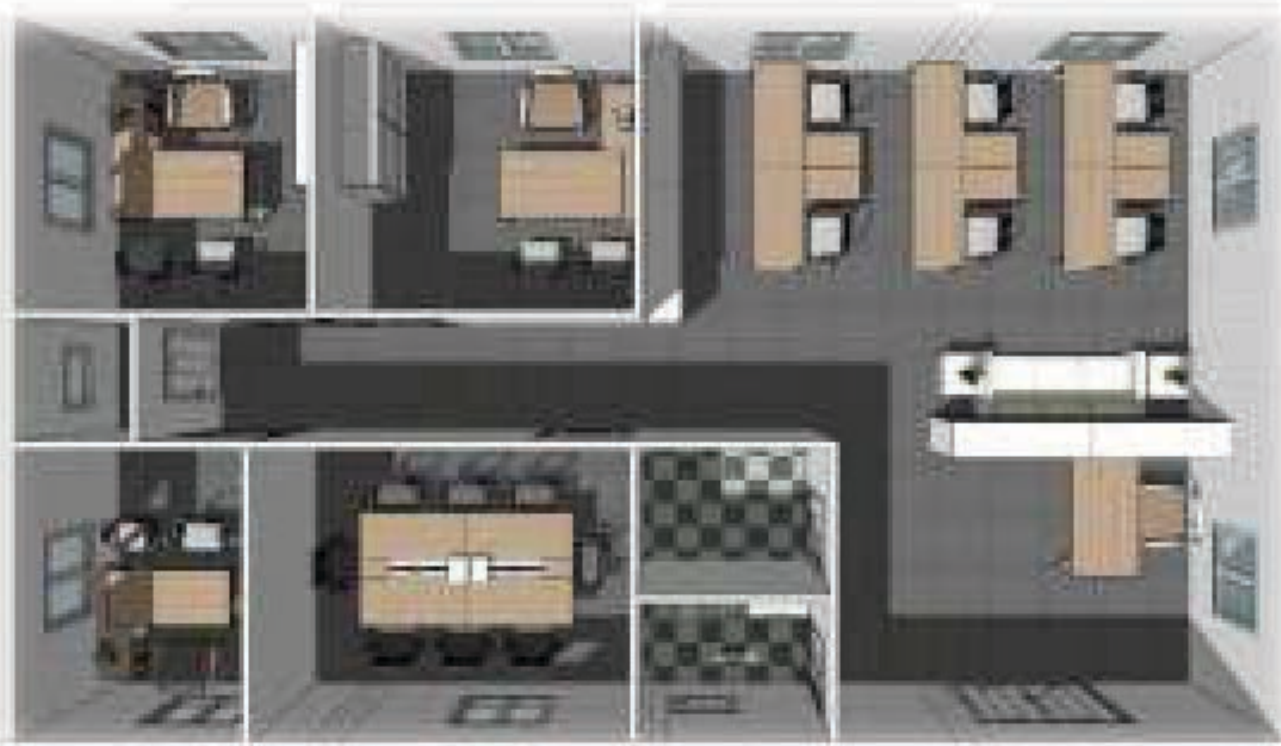


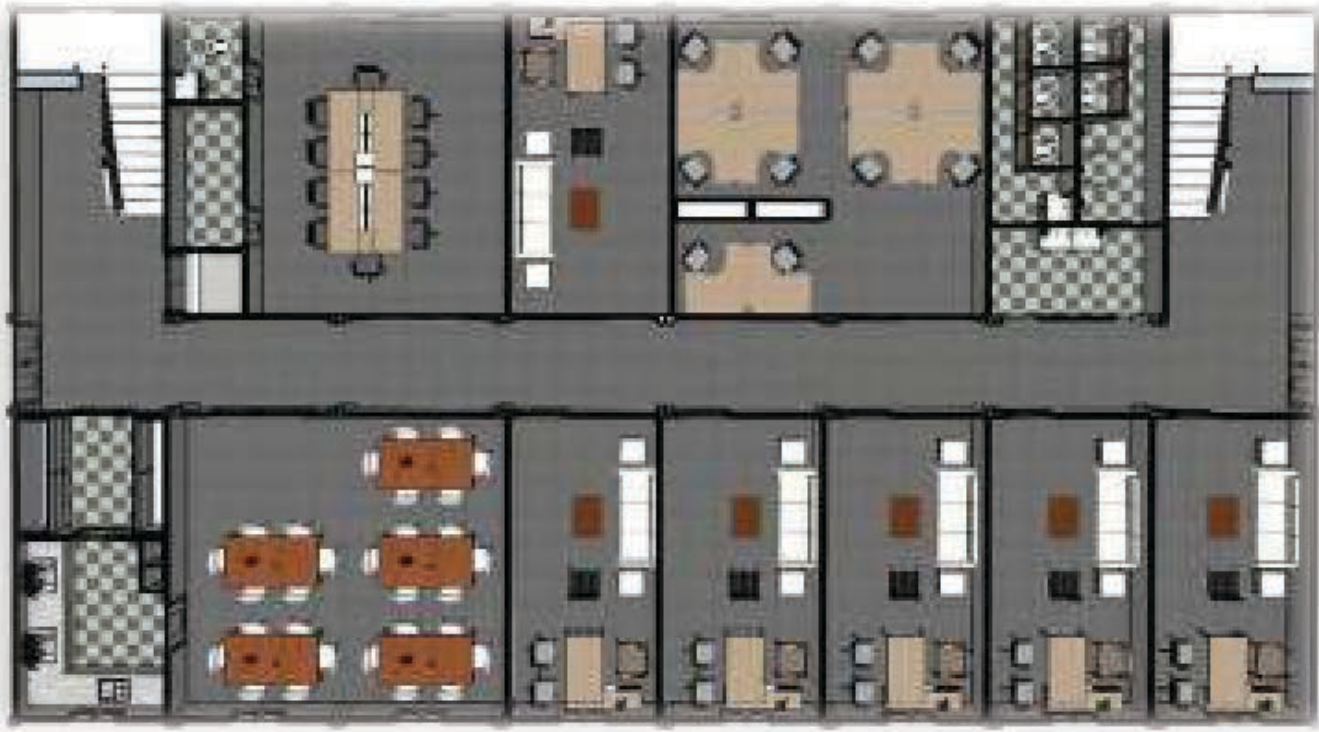


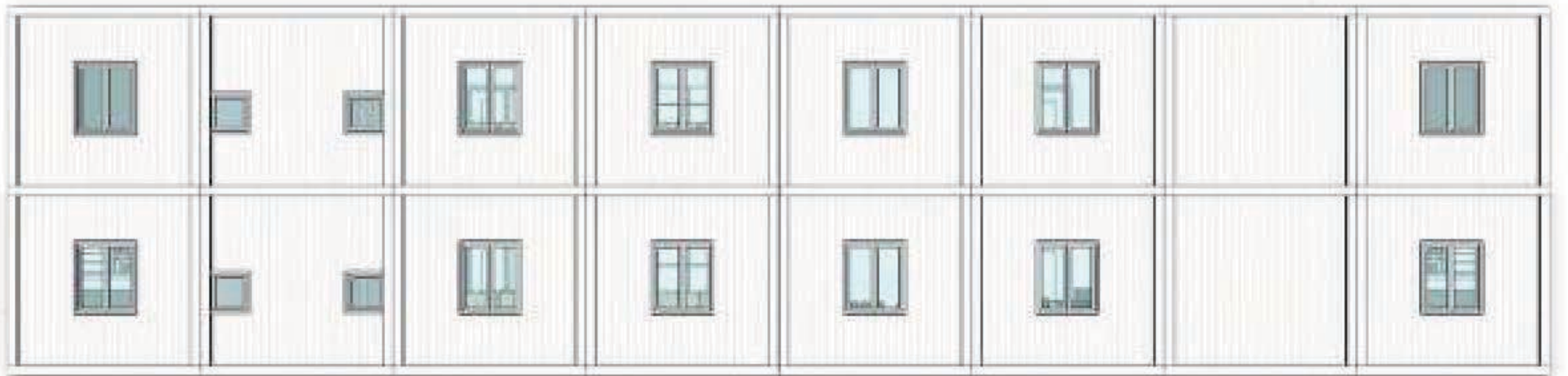








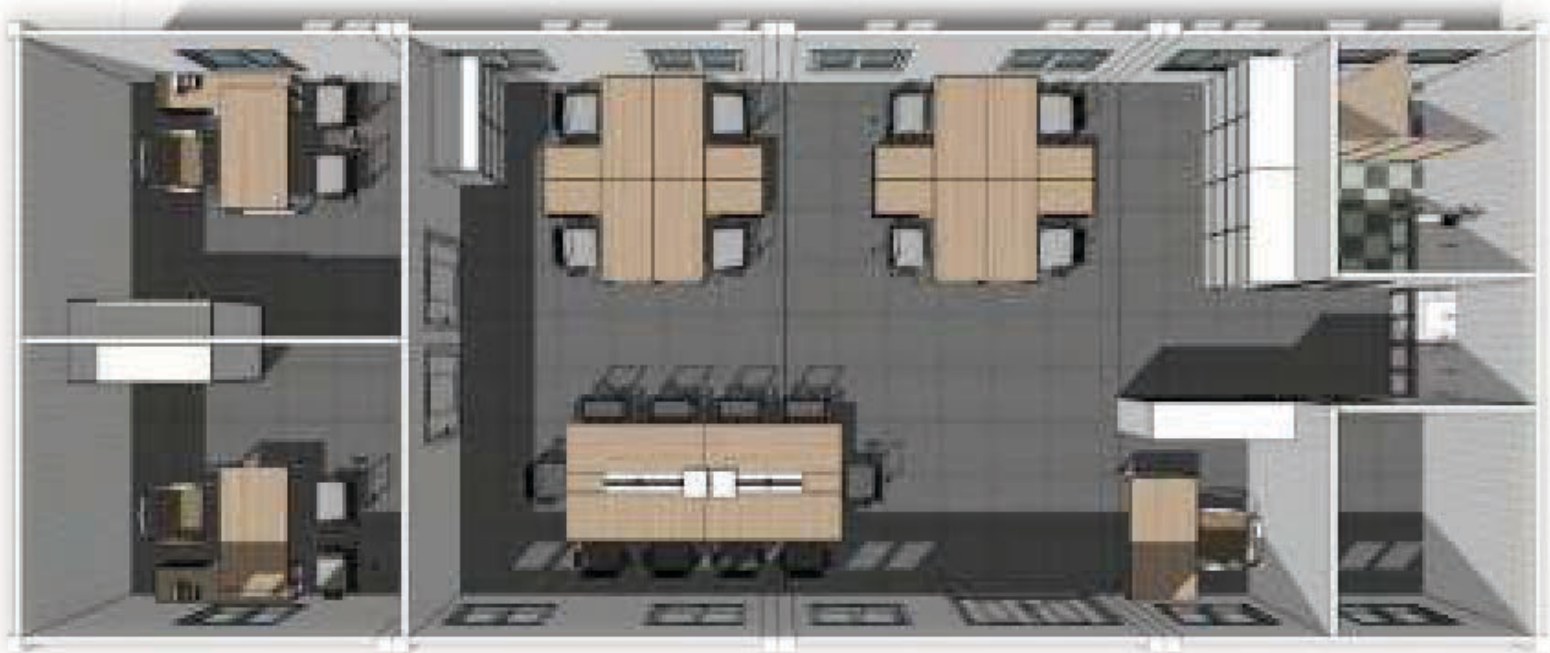


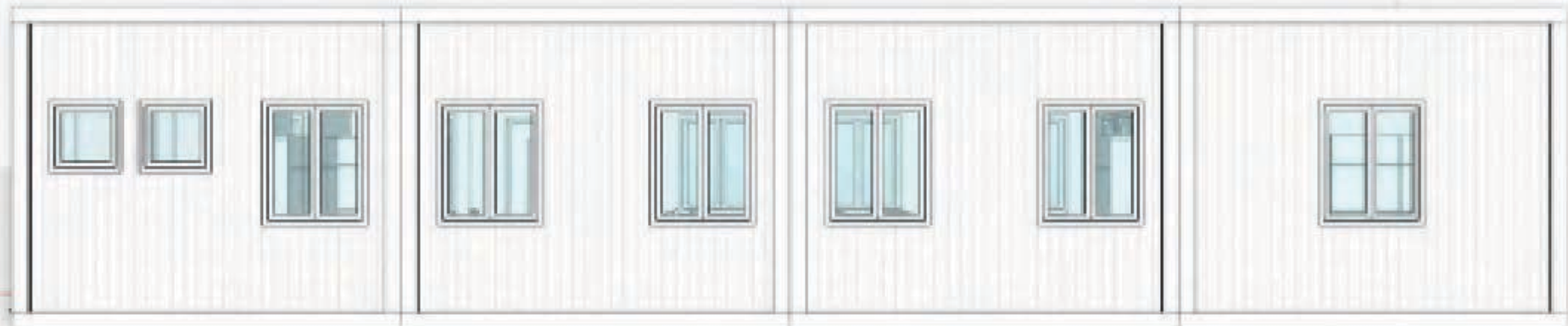
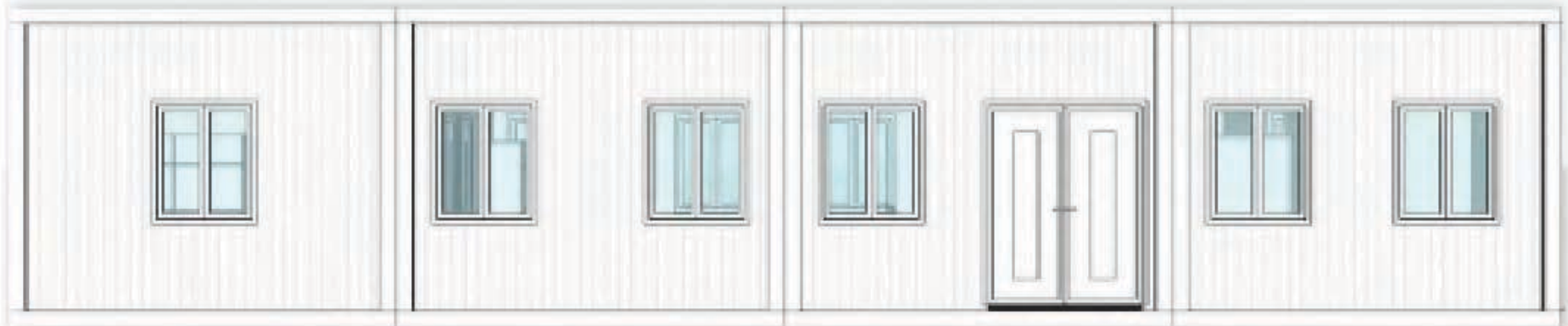






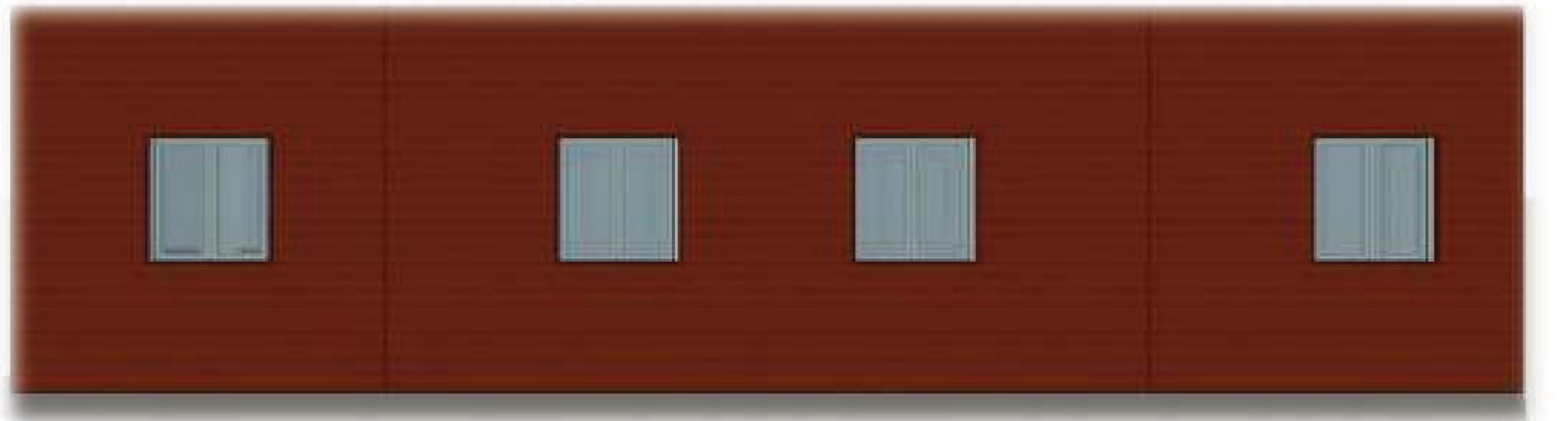




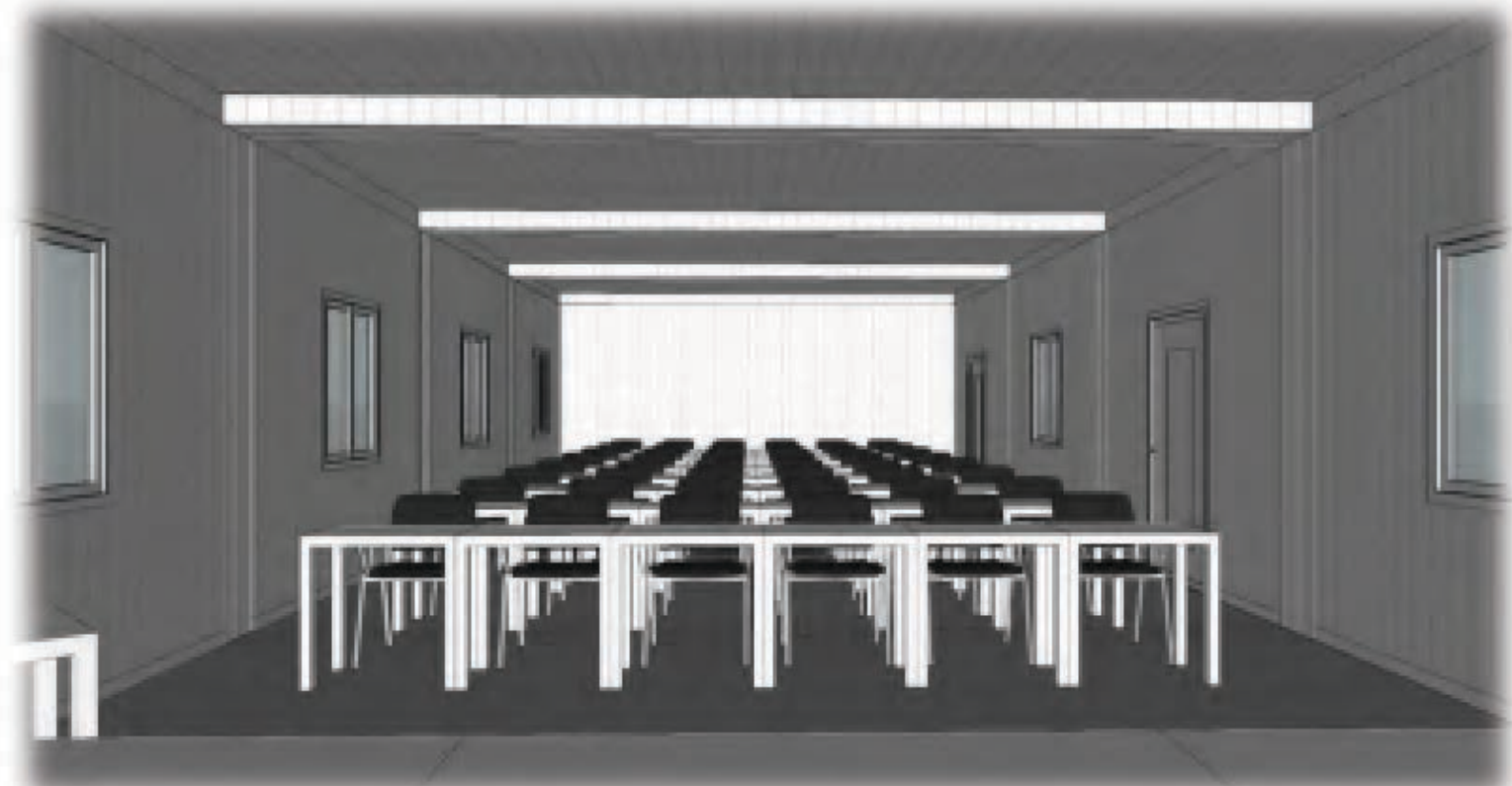
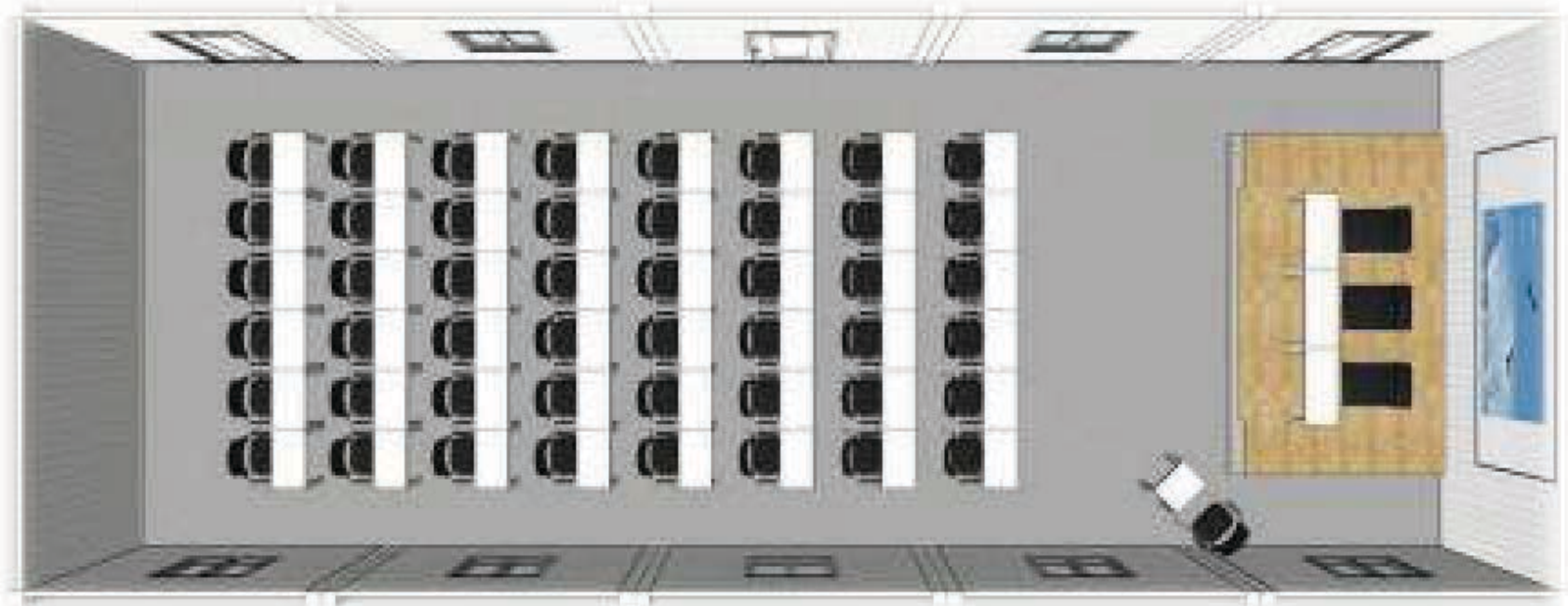






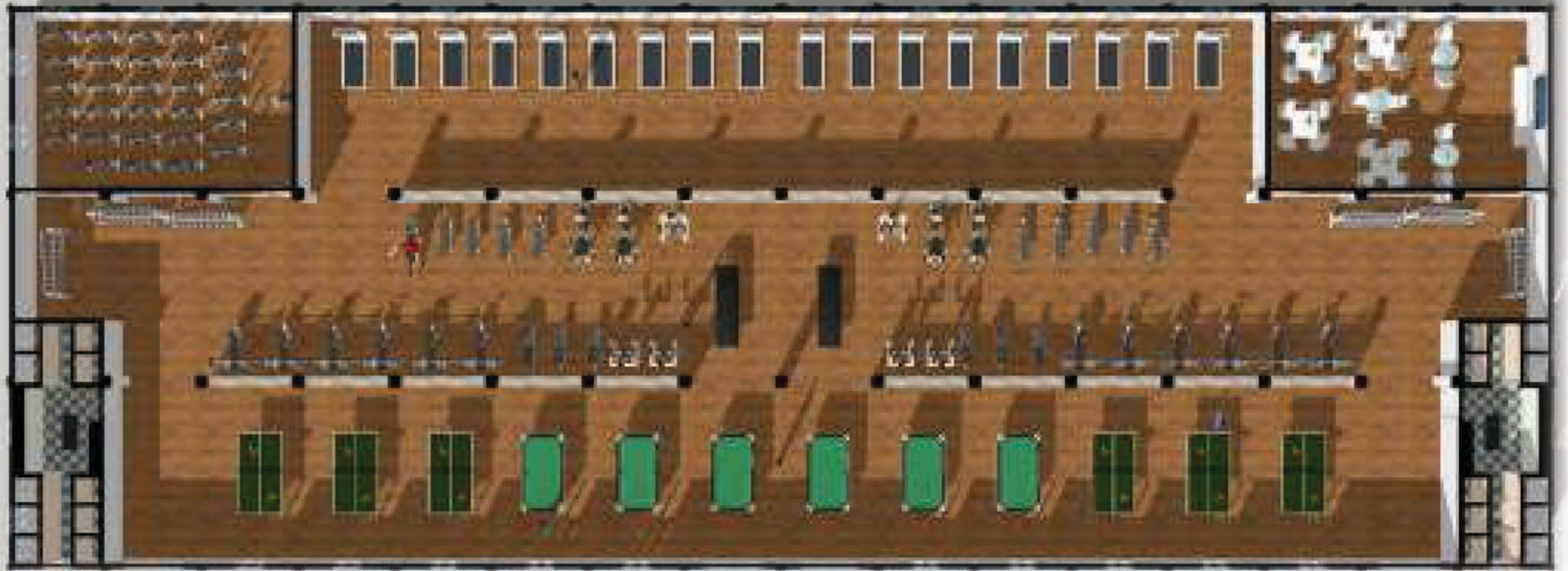


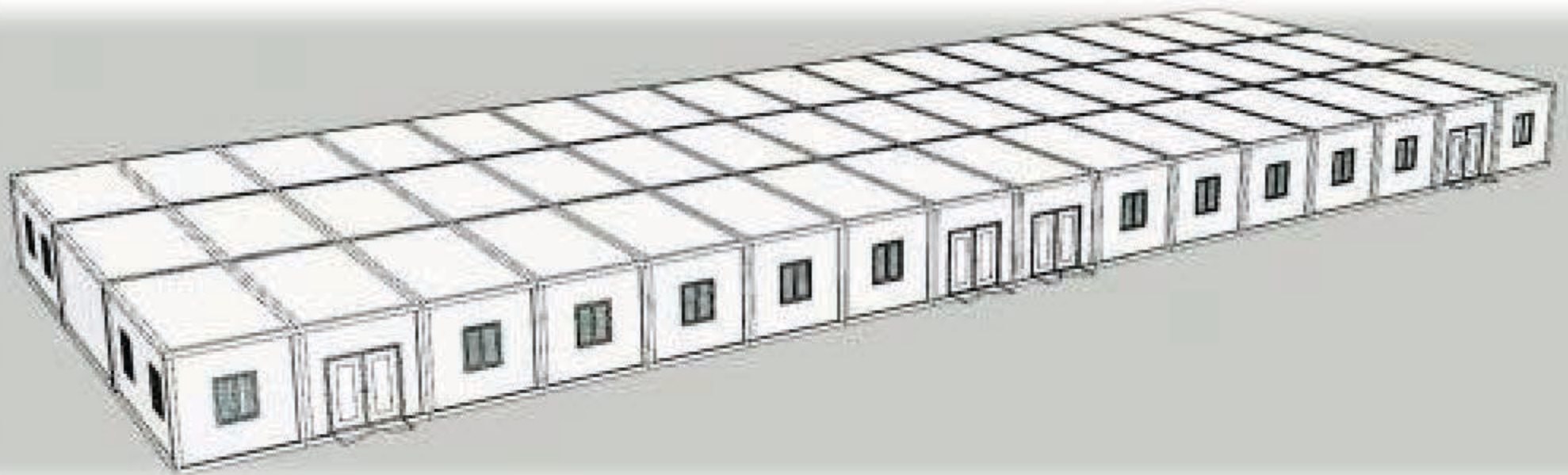












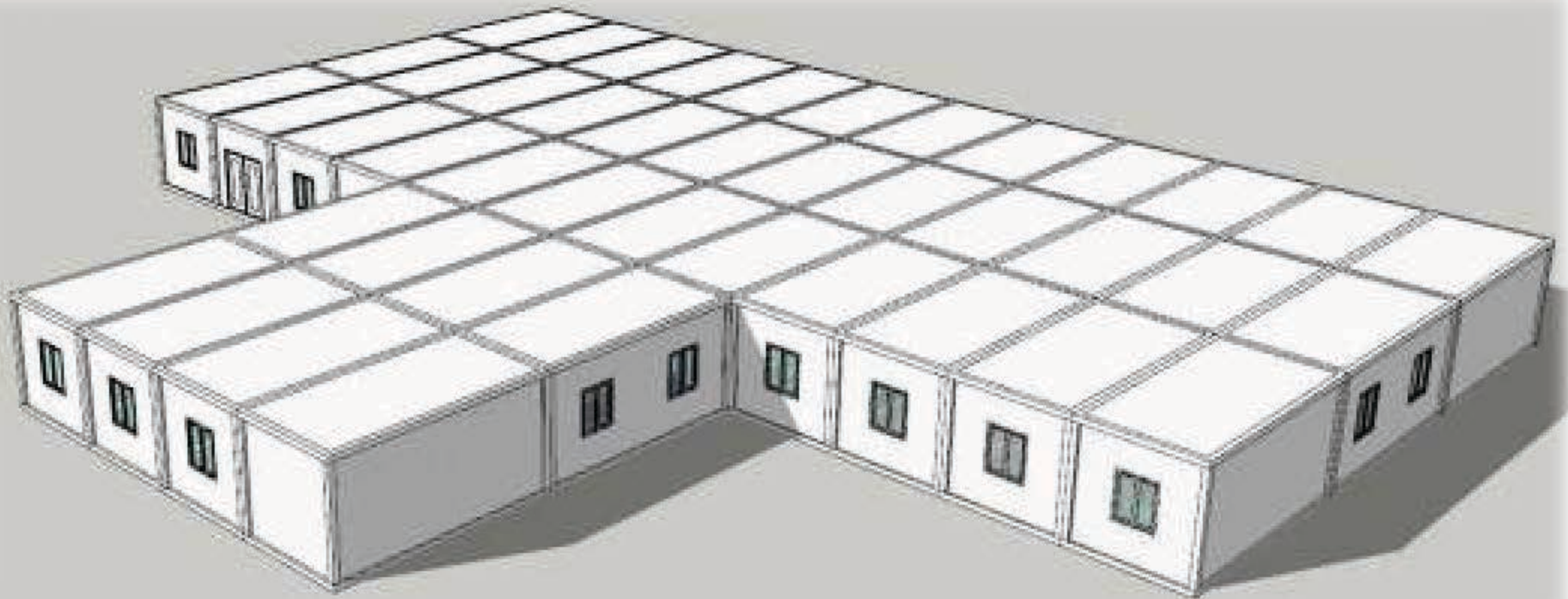










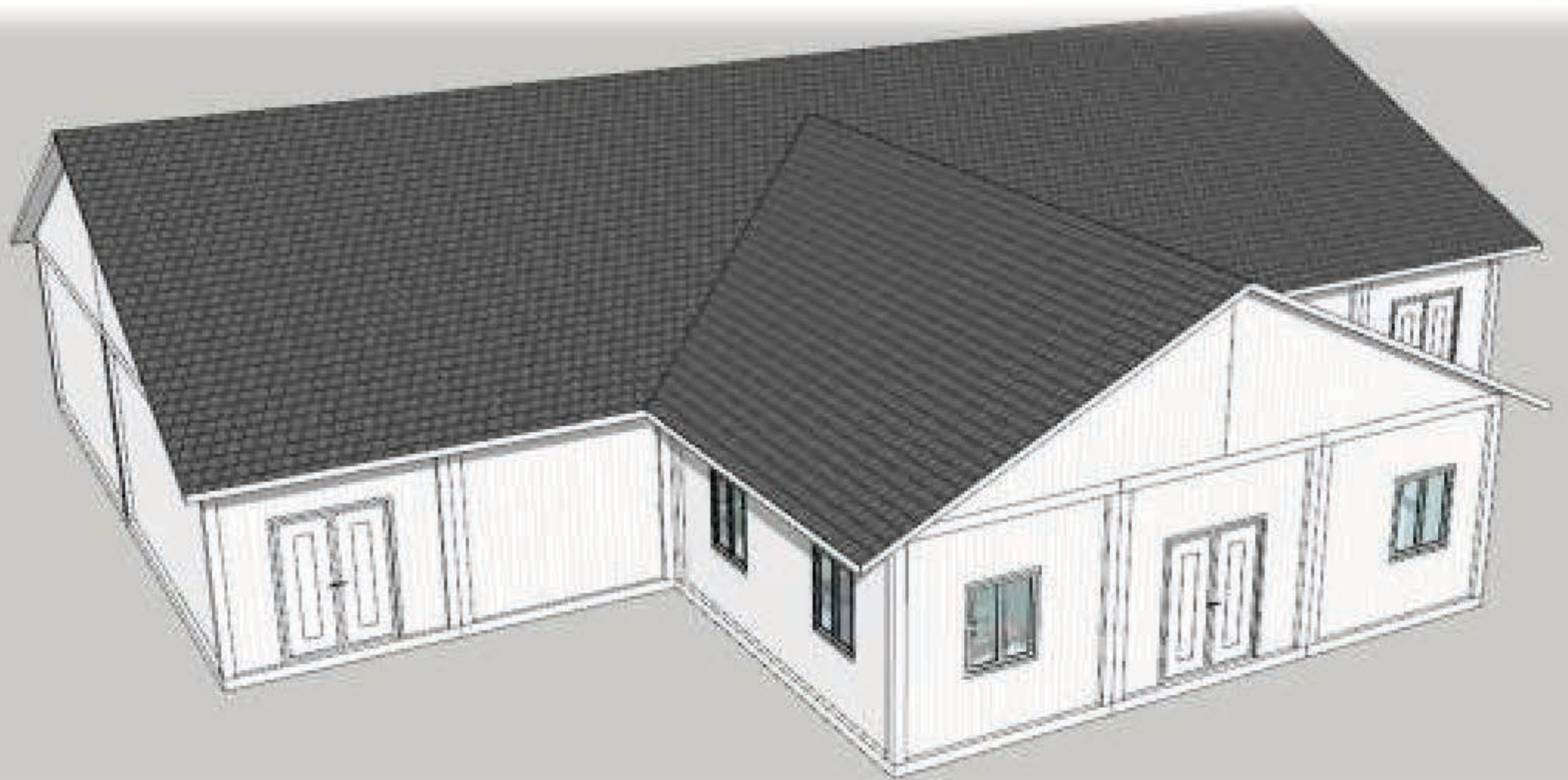








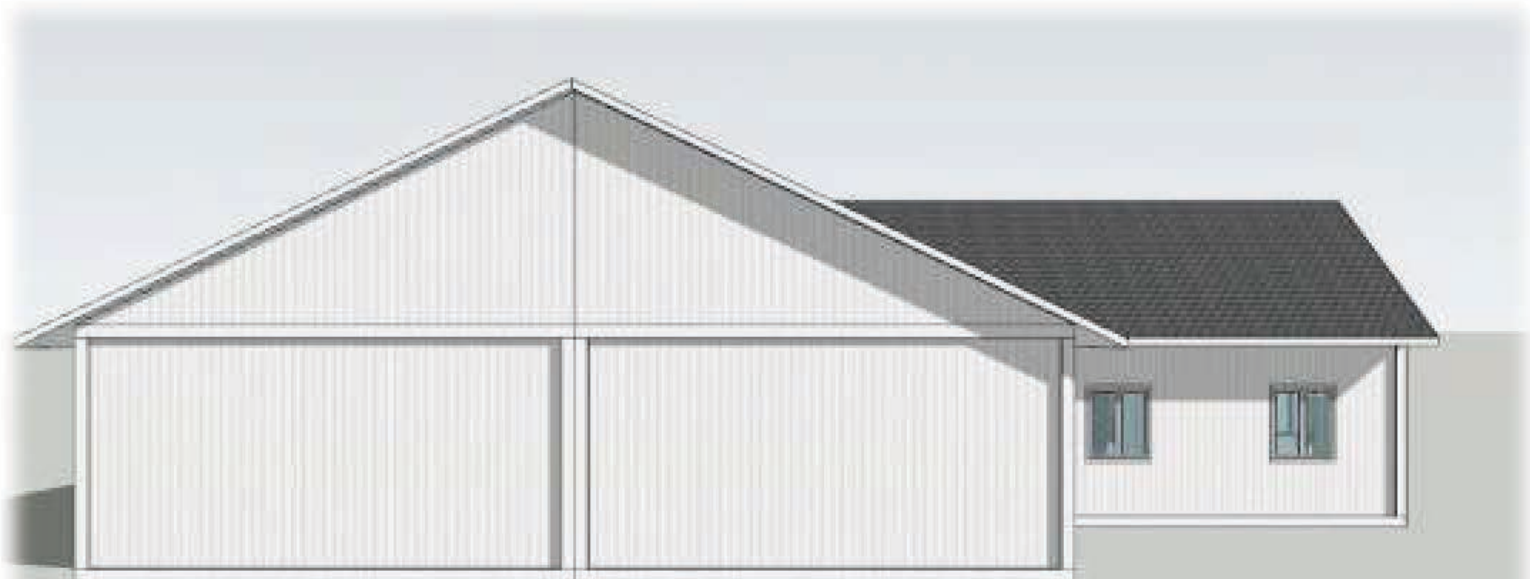


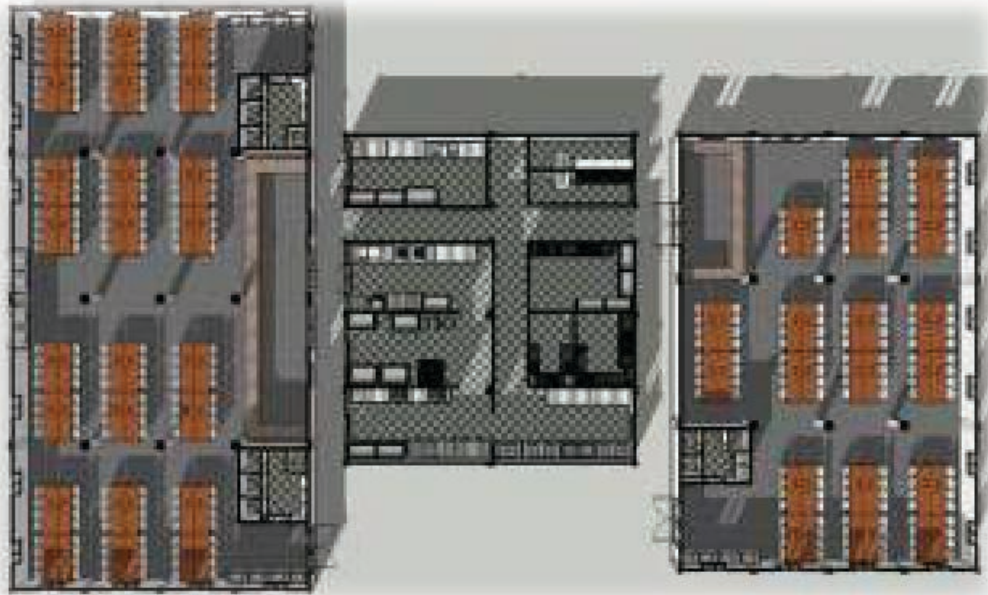


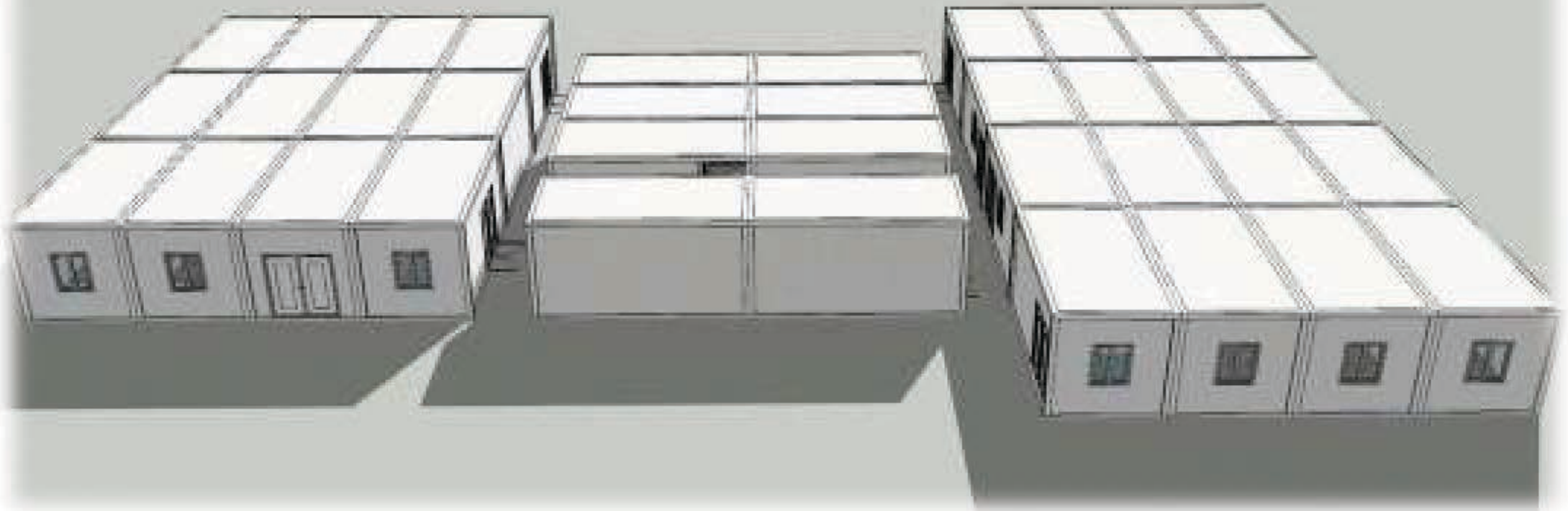




**GlobalAid Homes**  
By Quadrow Specialty Environments Inc.  
*"Building Hope, Rebuilding Lives"*

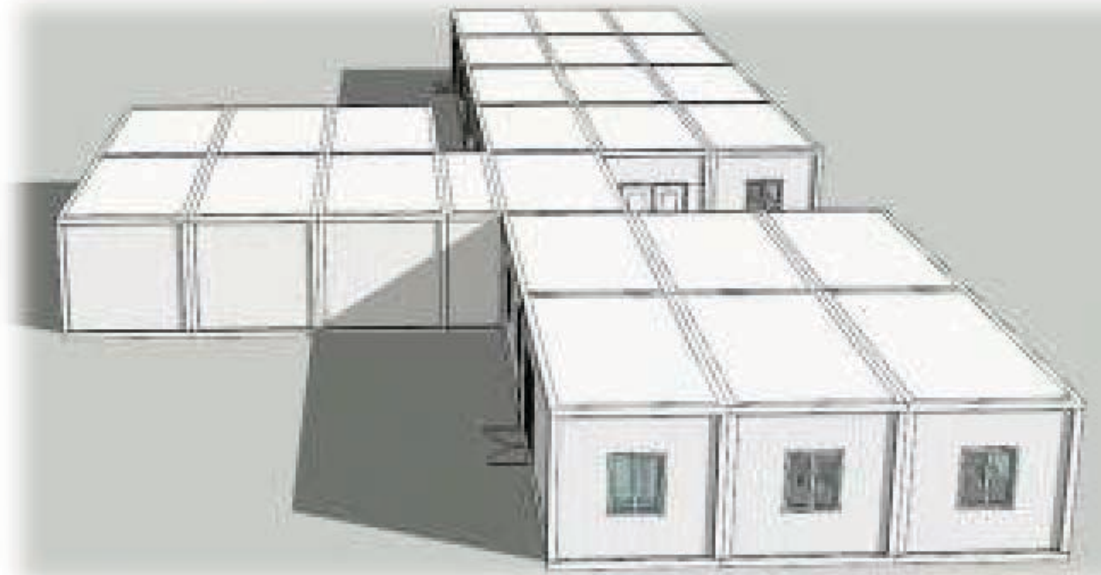
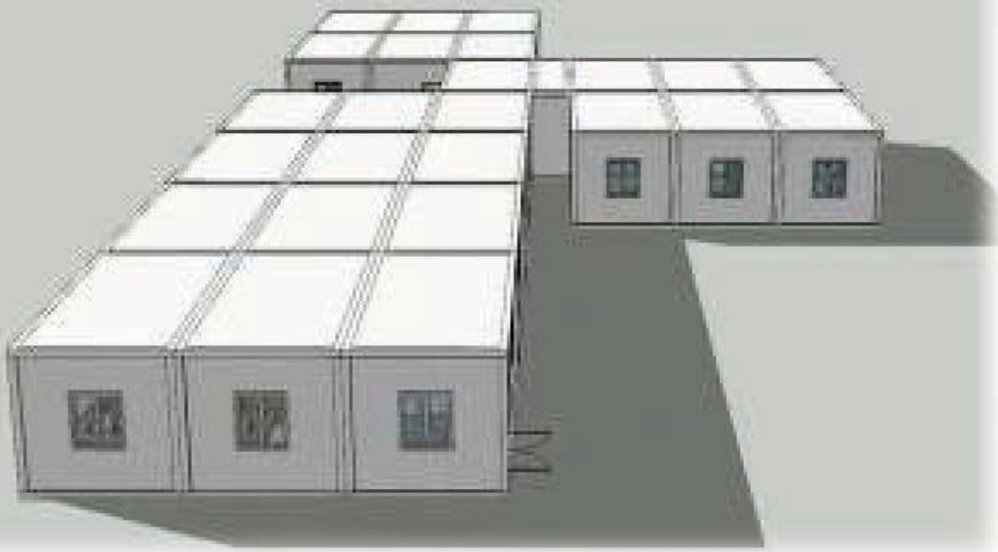




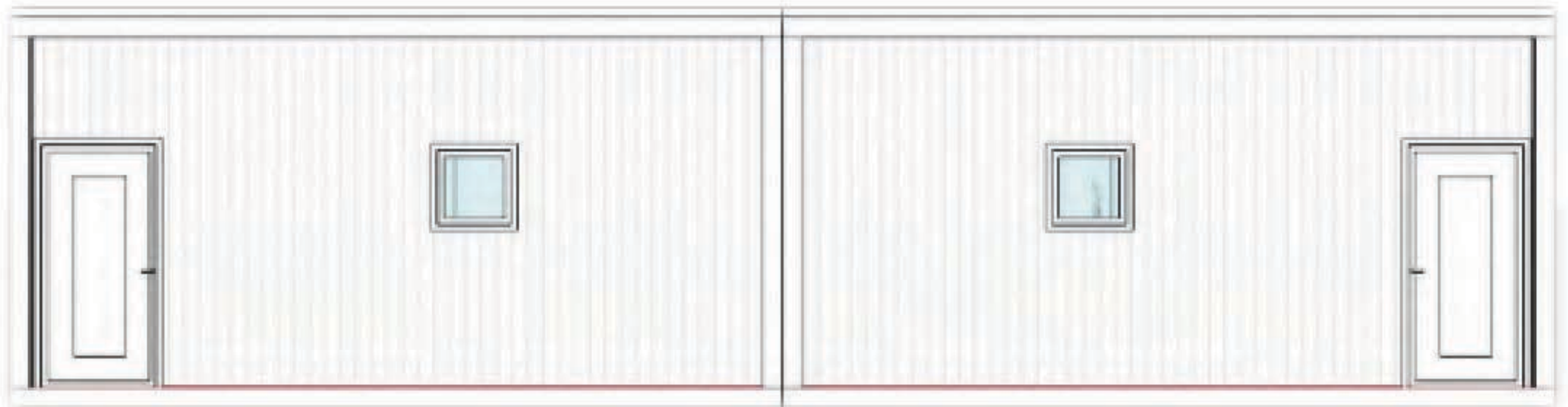










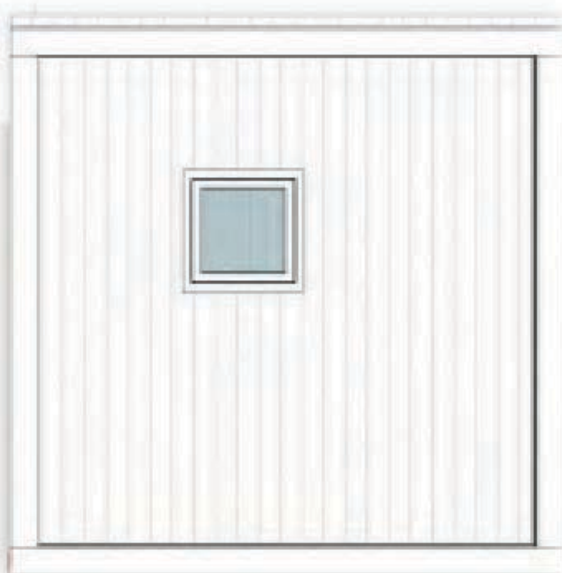
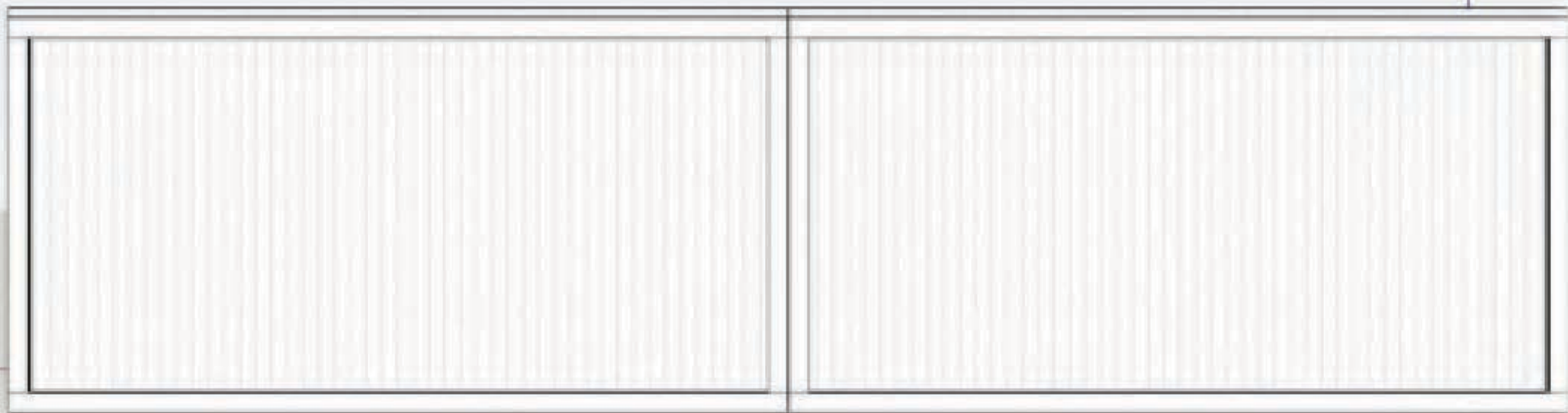


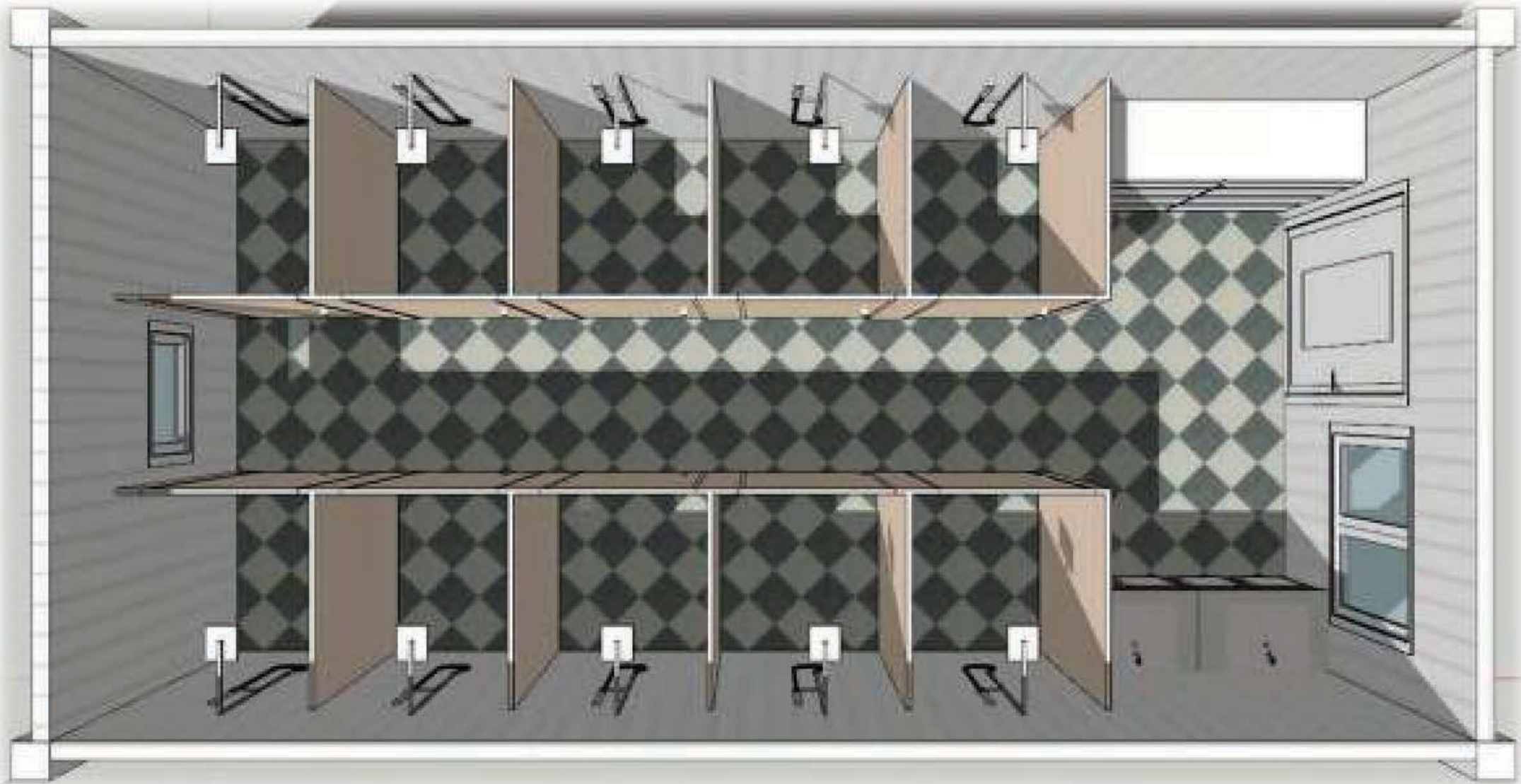


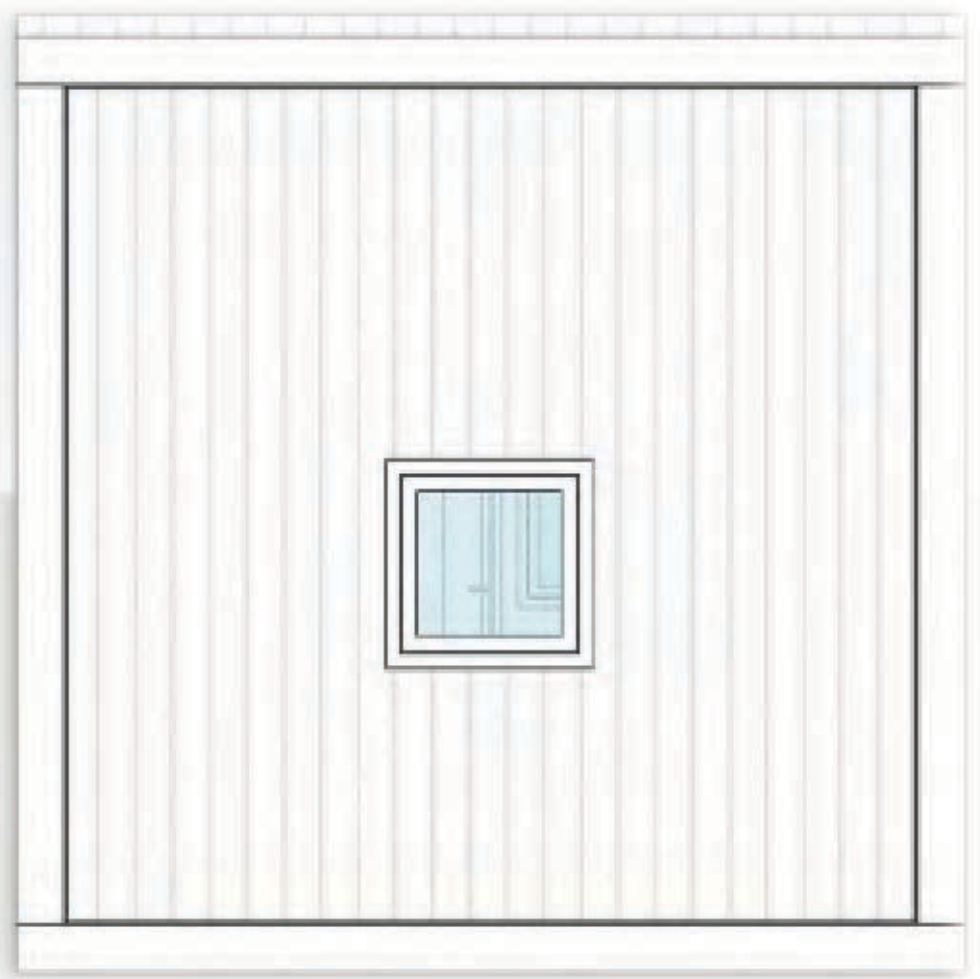
# GlobalAid Homes

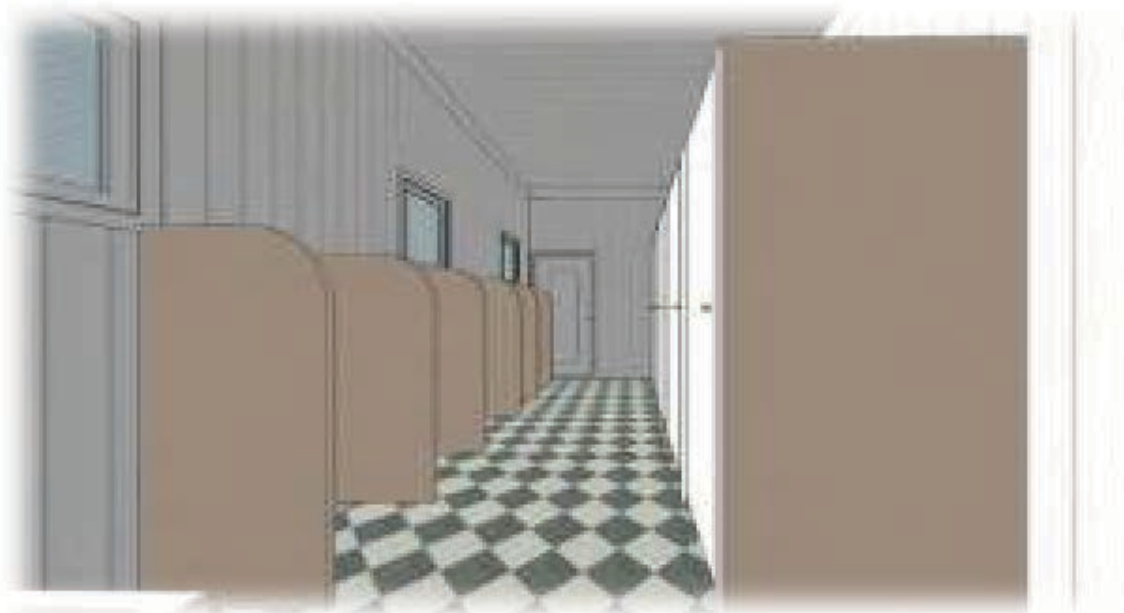
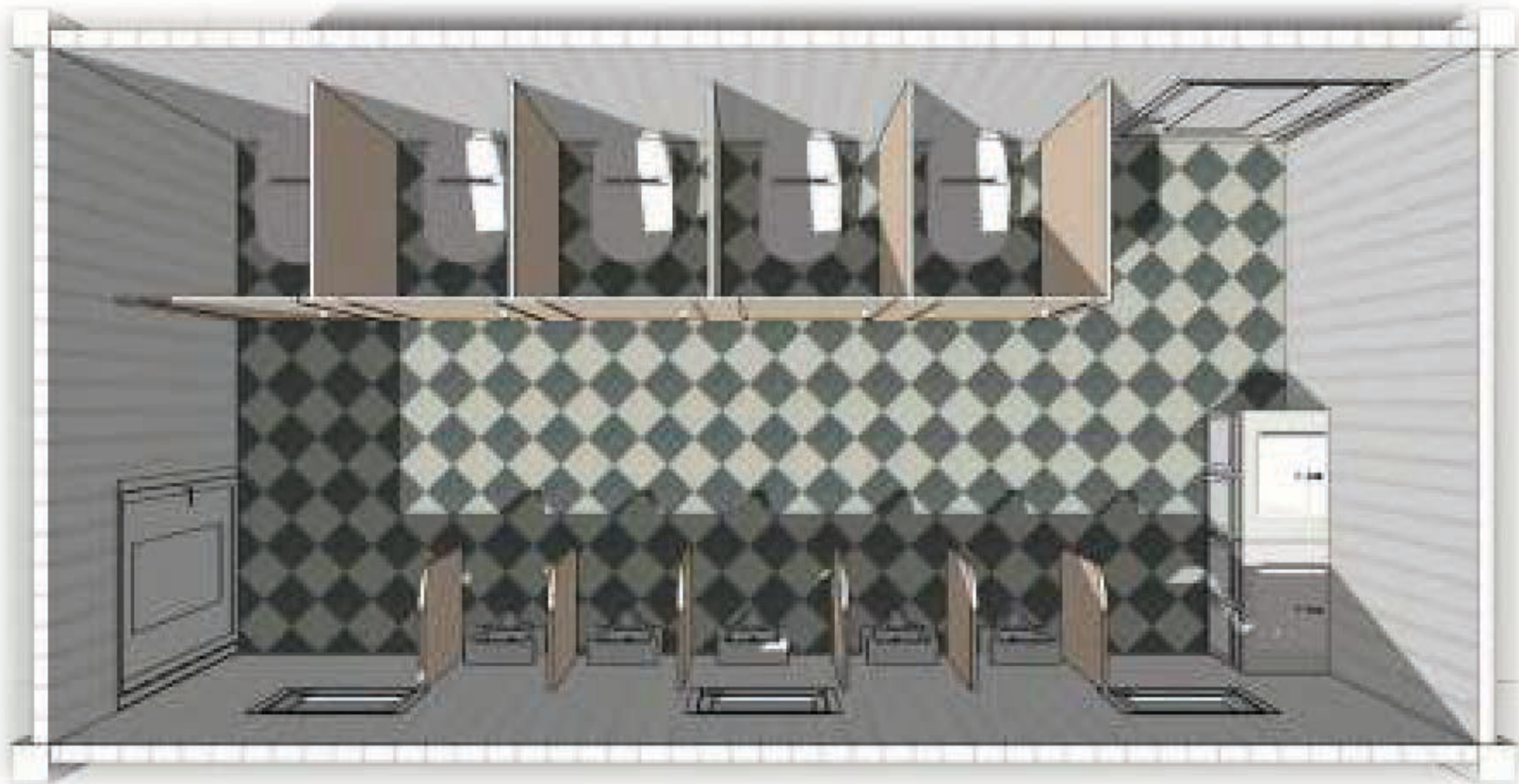
By Quadrow Specialty Environments Inc.

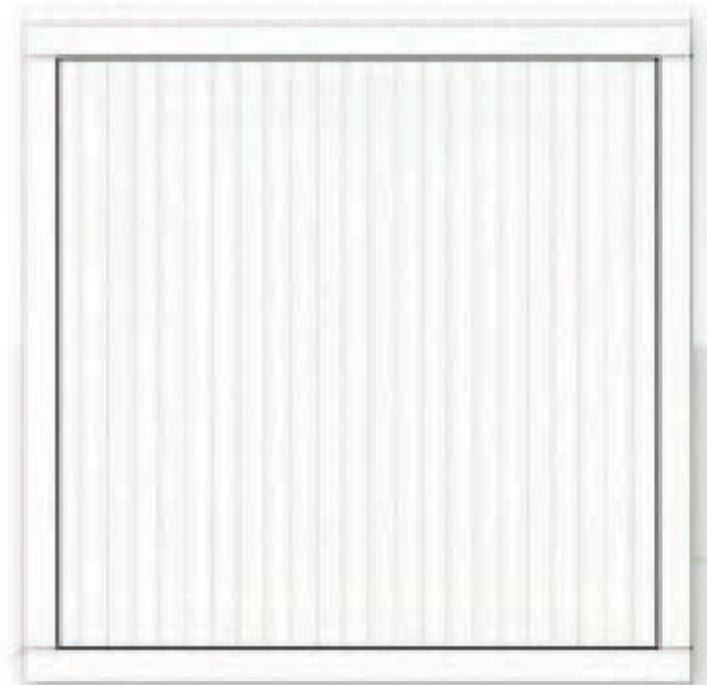
*"Building Hope, Rebuilding Lives"*

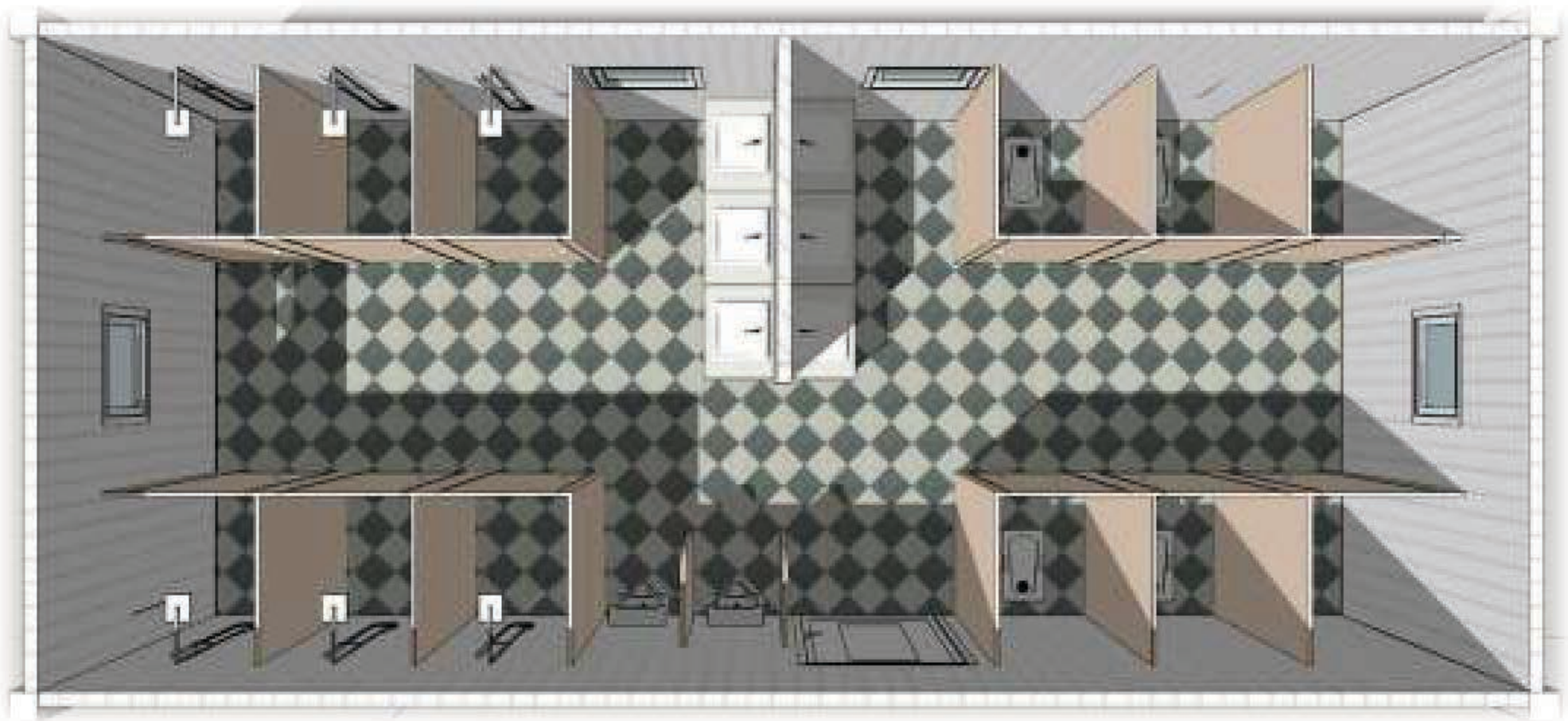






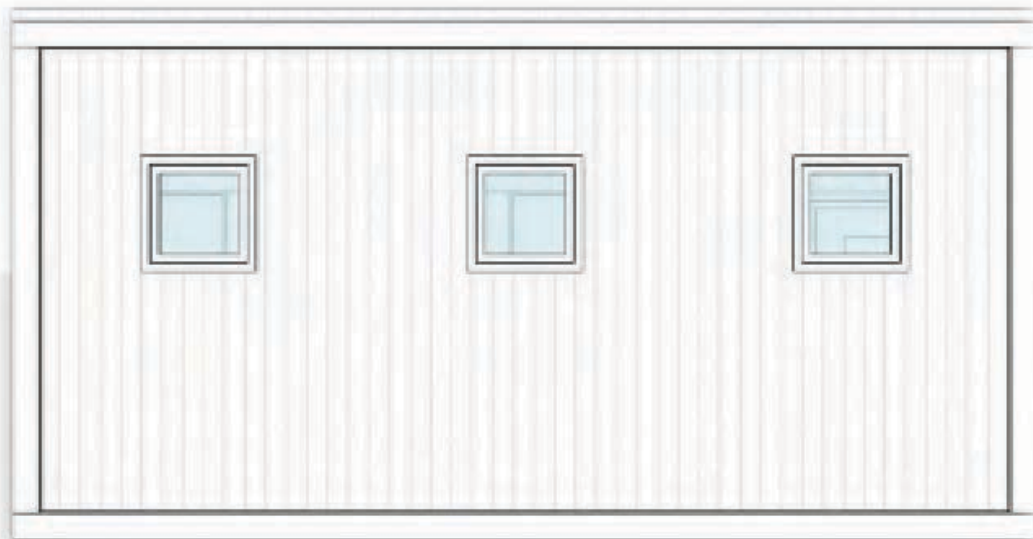


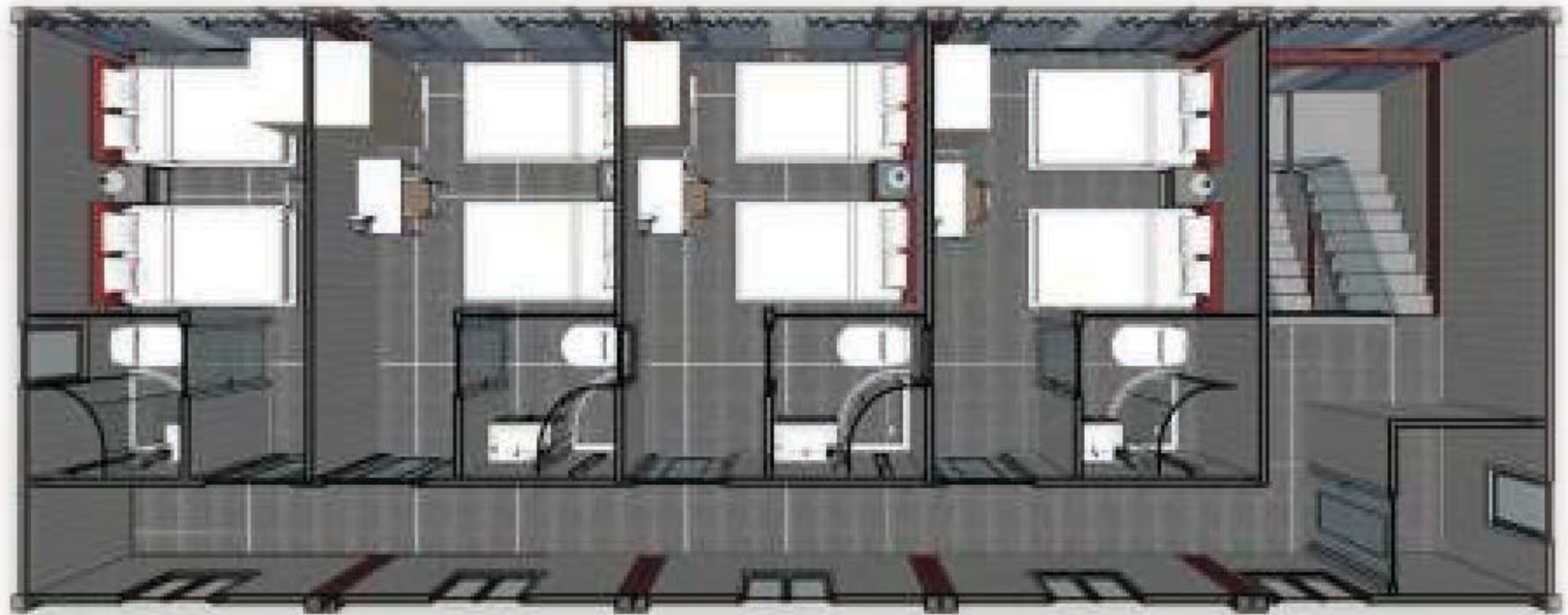


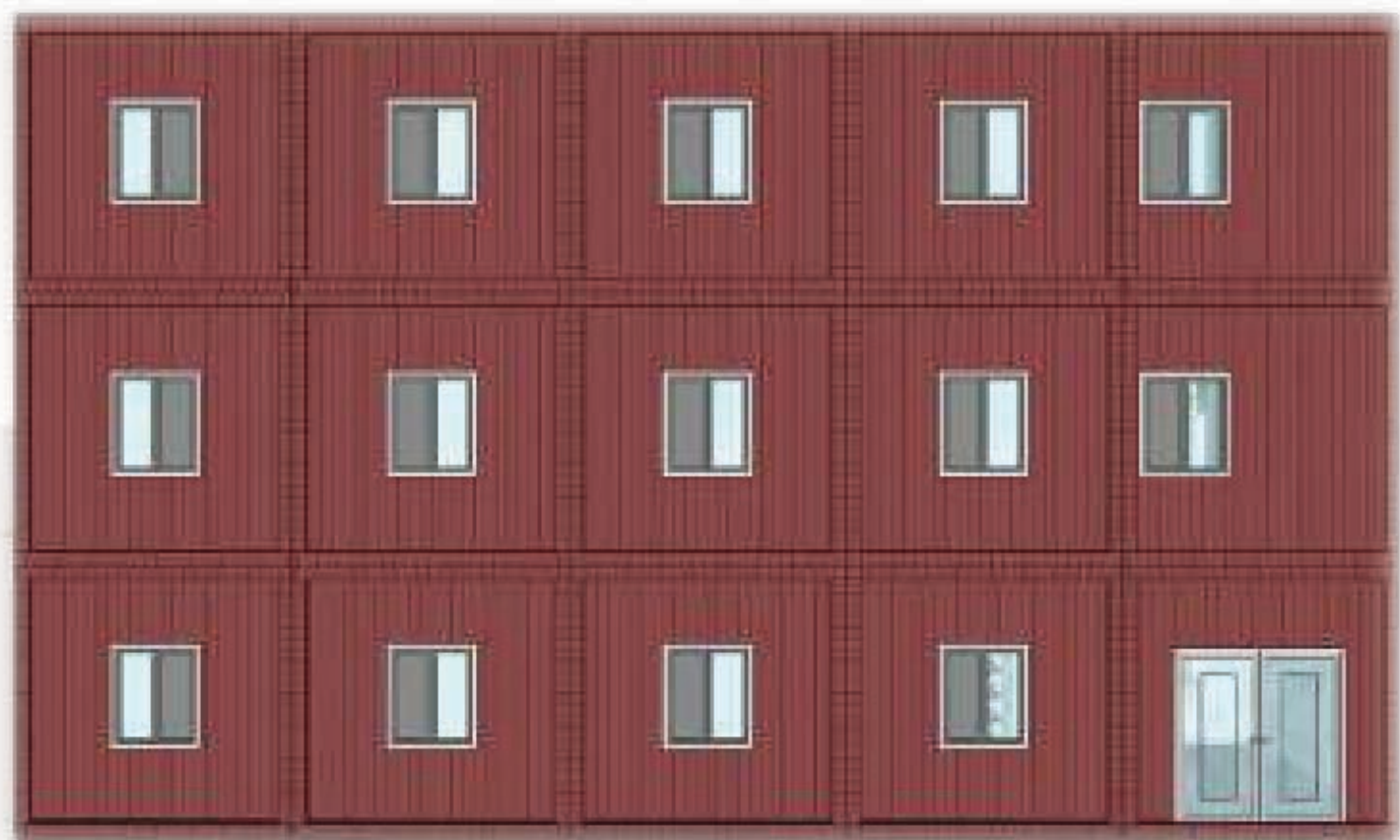


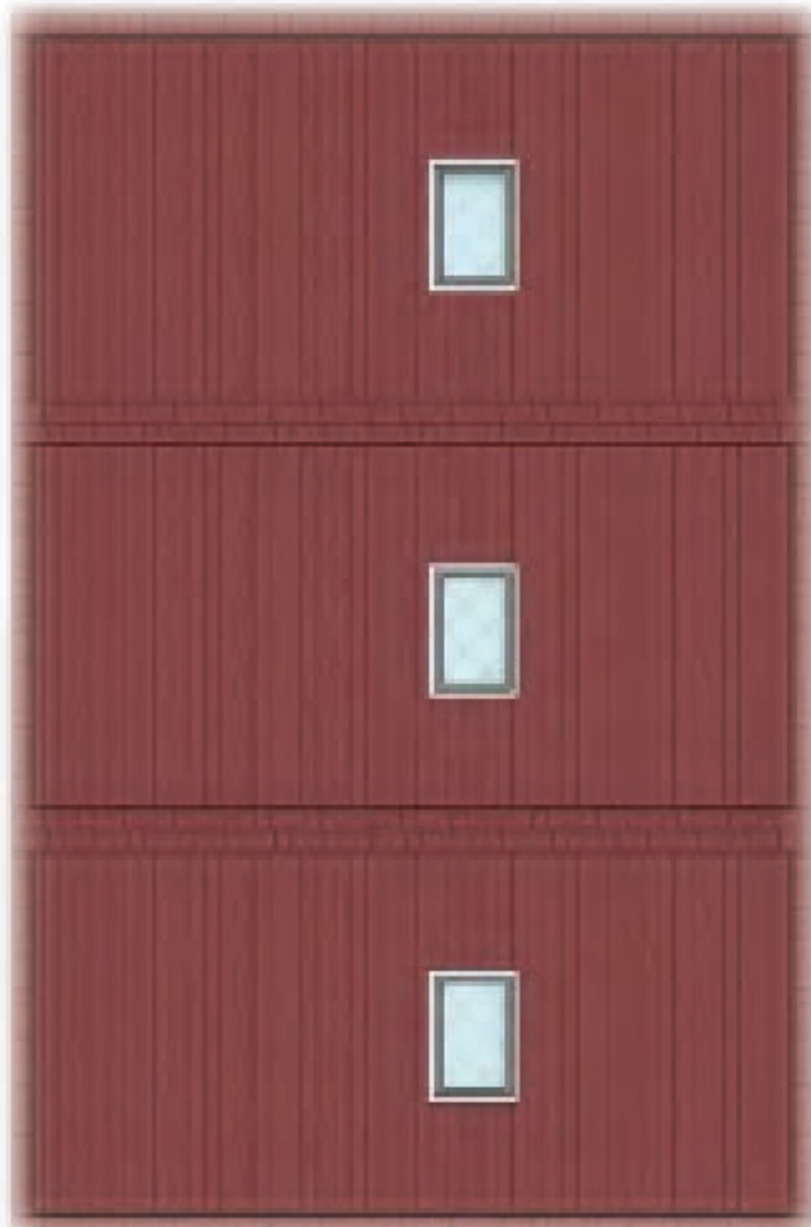
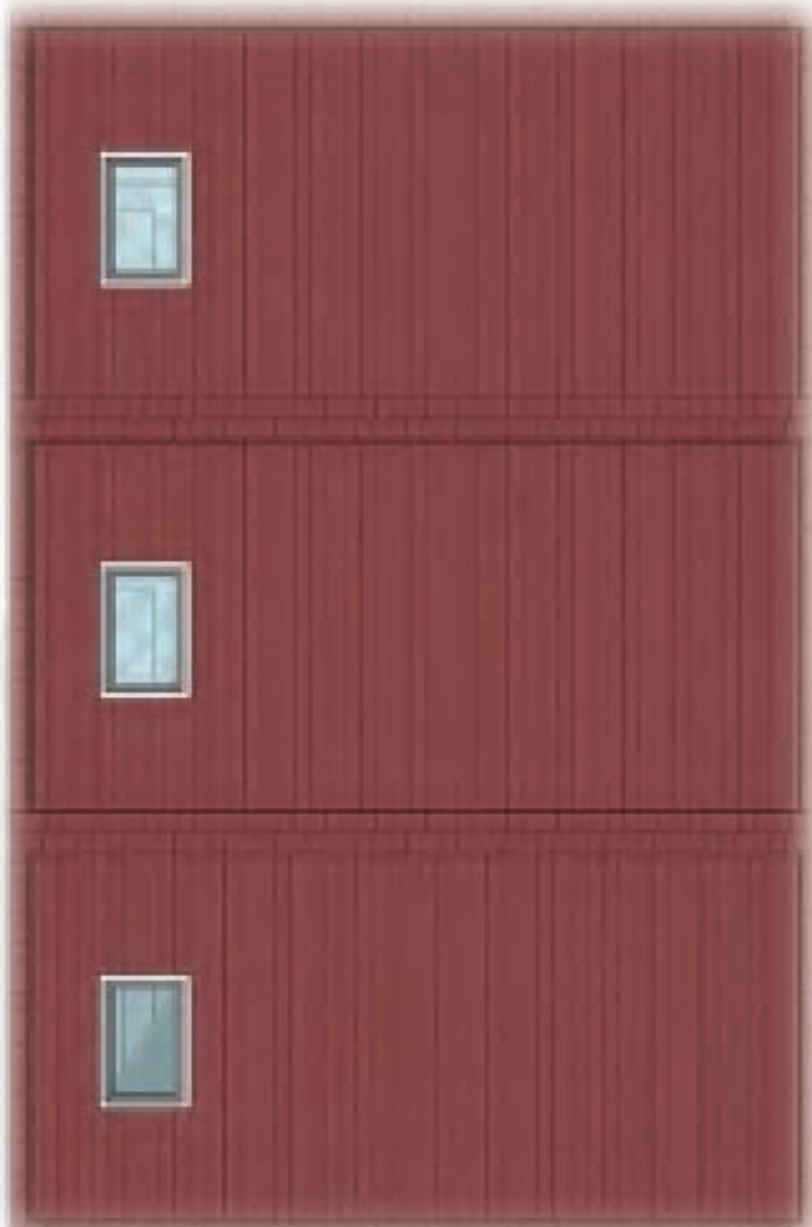






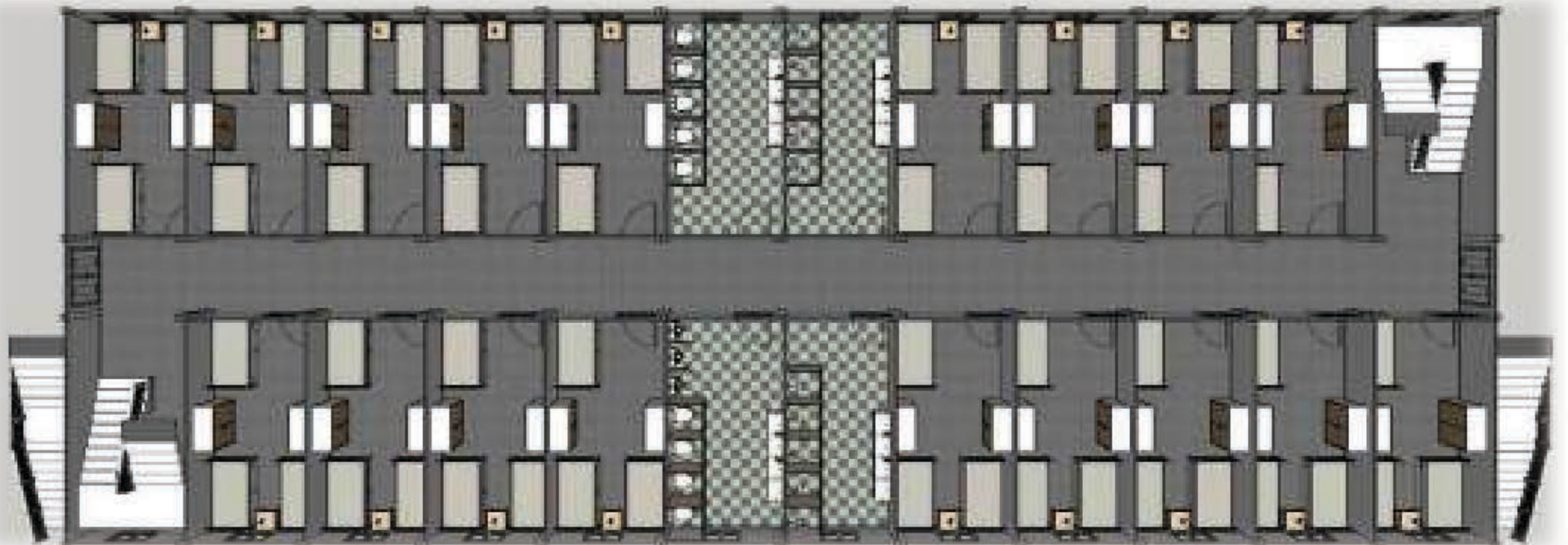
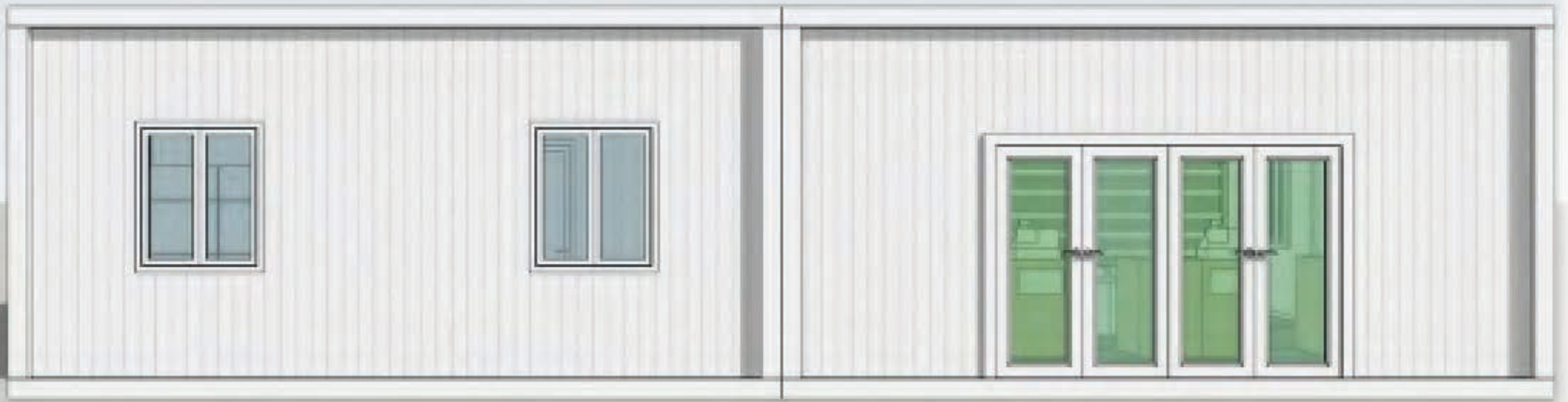






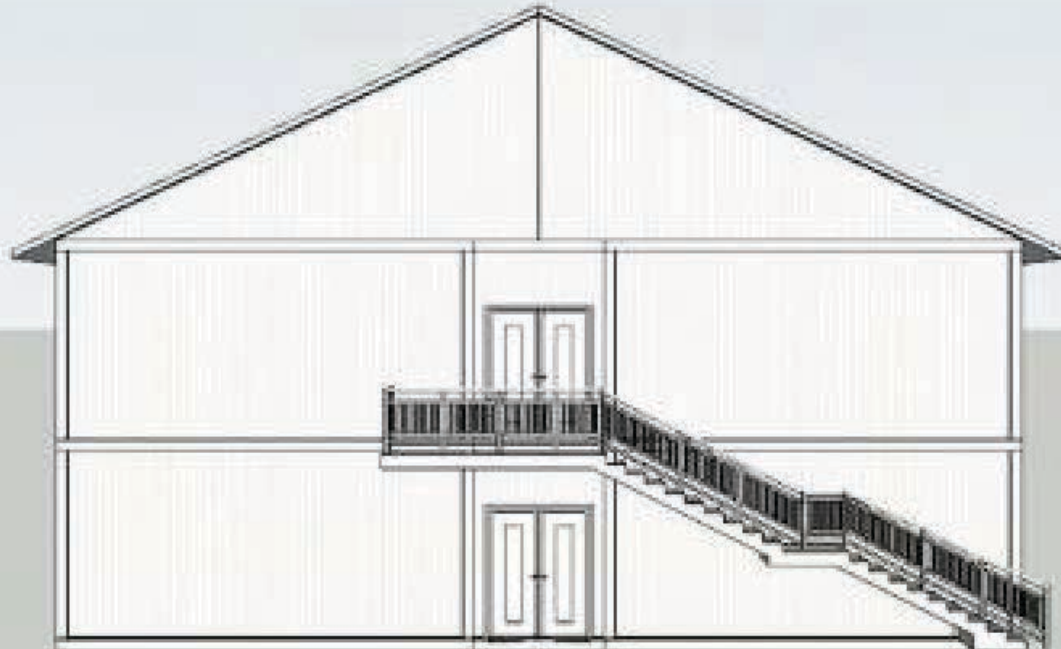
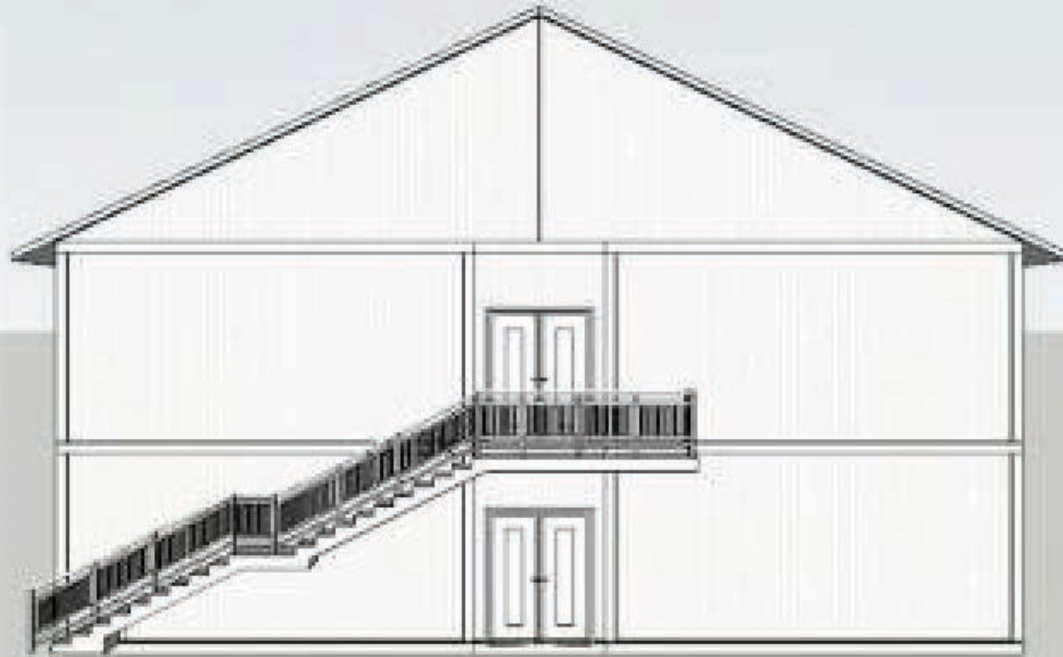






















# For more information contact us at:

## GlobalAid Homes



2901 E Alejo Rd  
Palm Springs, CA 92262  
United States

+1 (760) 799-3940



26-55 Administration Rd  
Concord ON L4K 4G9  
Canada

+1 (416) 707-4703



Mińska 65, 03-828  
Warszawa,  
Poland

+48 (728) 915-538

Email: [info@globalaidhomes.com](mailto:info@globalaidhomes.com)  
[www.globalaidhomes.com](http://www.globalaidhomes.com)



THANK YOU